

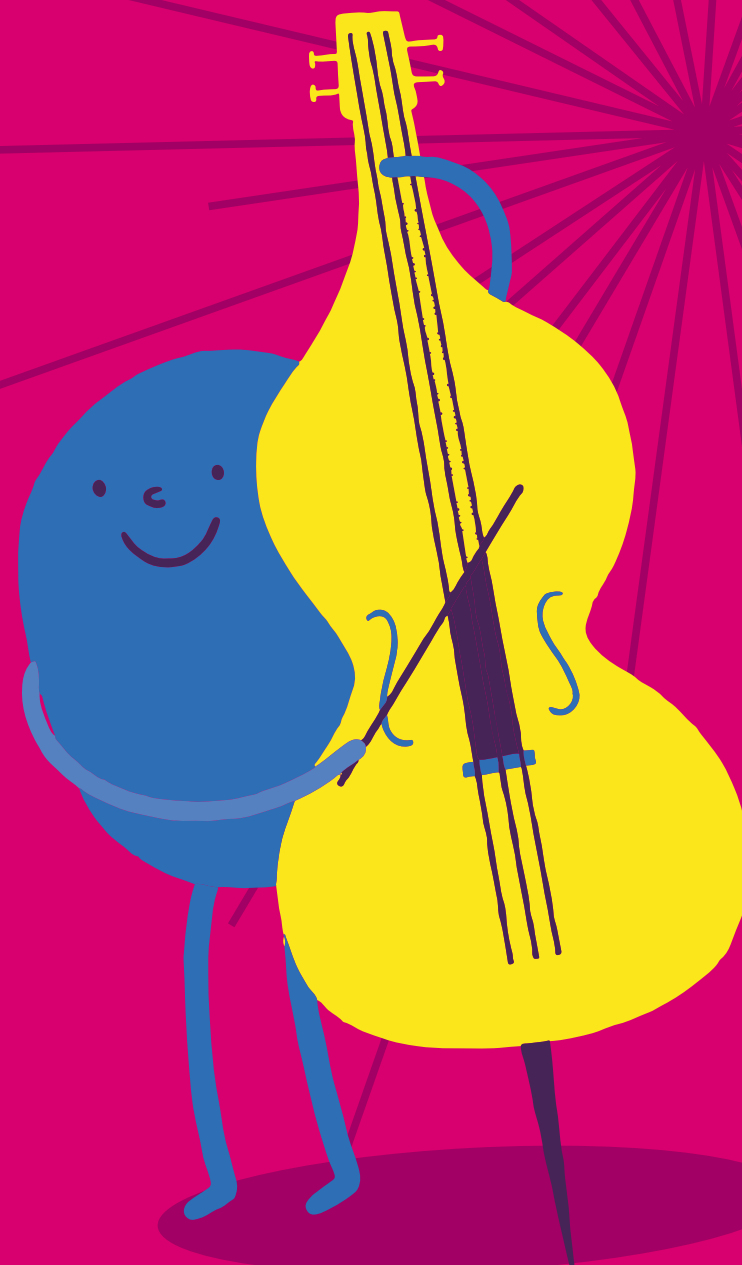
**BRISTOL
BEACON**

**BUILD A CREATIVE COMMUNITY
AND BECOME A**

BRISTOL BEACON MUSICAL SCHOOL

**Bristol Beacon Musical Schools
Primary Membership 23/24**

**NURTURE A COMMUNITY
OF CREATIVE LEARNERS**



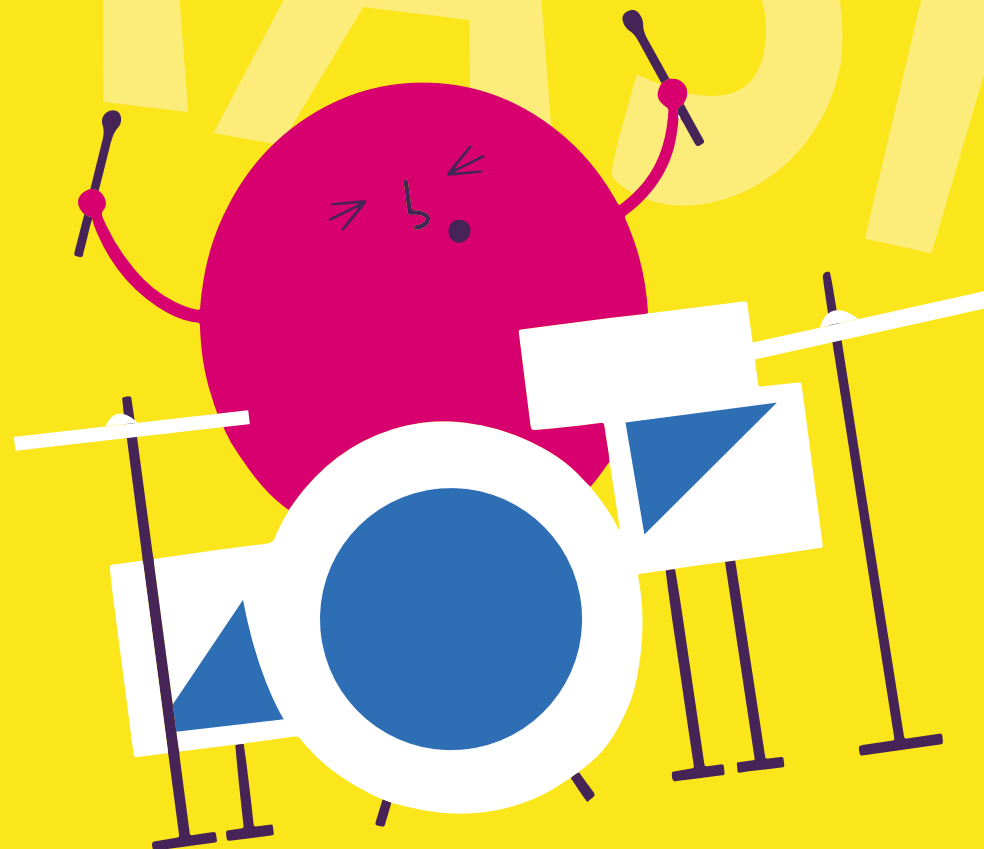
Become a Bristol Beacon Musical School

Bristol Beacon Musical
Schools Membership 03

Membership at a glance 04

What's included 06

Whole Class Ensemble Tuition 08



Bristol Beacon Musical Schools Membership

What is the Bristol Beacon Musical Schools membership?

Whether you are already a musical school or just starting out on the journey, the Bristol Beacon Musical Schools membership aims to support all schools in the city to achieve musical excellence.

Our award-winning programme supports schools through a range of high-quality curriculum resources, enrichment activities and teacher training opportunities. We work closely with the Department for Education, Ofsted, Arts Council England and industry organisations across the music education sector to make sure we are at the cutting-edge of inclusive practice in musical teaching and learning.

New for 2023/24

Our programme is constantly developing in response to the needs of Bristol schools. This year the programme allows our member schools increased access to our world-class performance spaces, opening in November 2023. We have also updated our pricing structure to reflect the sizes of the different schools we work with. Our instrumental music lessons (with and without timetabling) can now be found in the add-ons section of our membership offer. To view the bursaries and discounts available to the students in your school, please see our bursaries, discounts and fees policy.



We believe that music can support everyone to thrive musically, socially and personally. Our experienced and knowledgeable team is here to support you to create and maintain a thriving inclusive musical community that fosters a lifelong love of music. Being a Bristol Beacon Musical School means you will have access to the resources and tools needed to build cultural capital and bring music to life in your school in line with the National Curriculum.



Adam Kent Director of Creative Learning and Engagement

At a glance: Bristol Beacon Musical Schools Primary Membership

Included in membership

- Full access to the Bristol Beacon's Annual Schools' CPD Programme
- Free places at massed singing events held at Bristol Beacon performance spaces and across the city
- Attendance at a massed WCET Celebration event at Bristol Beacon
- 10 weeks of Whole Class Ensemble Tuition (WCET)
- WCET Instrument set for 11 weeks
- Support with your school's Musical Development Plan
- 1 Staff Meeting run by a member of the Bristol Beacon Hub team
- Full access to the Bristol Beacon curriculum including all digital resources
- 1 x 30 min bespoke singing assembly run by a member of the Bristol Beacon Hub team with follow-up CPD
- Support with your school's singing strategy
- Attendance at an instrument demo workshop/access to livestreamed instrument demos
- Free access for music leads to use the Bristol Beacon sheet music library
- Membership welcome pack, including full set of Musical Moments cards and Rhythm Notation cards and all digital resources to support classroom delivery

At a glance: Membership pricing and add-ons

Membership type

School size of 1-250 children

School size of 250-450 children

School size of 450+ children

Price

£350 annual membership fee

£450 annual membership fee

£550 annual membership fee

Add-on

Instrumental Music Lessons (without timetabling)*

Timetabling and administration of Instrumental Music Lessons

WCET Continuation

WCET Training for Schools

Bespoke workshops

Lunchtime or afterschool choirs/ensembles

Inset day (up to 5 hours)

Additional staff meetings

1-day consultancy

Attendance at our Primary Orchestra events

Bespoke CPD sessions

Price

£42 per hour

£90 per block of 30 pupils

£300 per class, per double term

£250 for 3 teachers

£42 per hour

£42 per hour

£175

£75 per meeting

£220

£3 per child (except Pupil Premium)

Price available upon request

*We would recommend offering parents the following options: Individual lessons for 20 minutes/30 minutes, and small group lessons (2-4 students) for 30 minutes. 33 lessons are delivered across an academic year.

What's included

Instrumental Music Lessons (without timetabling)

We provide highly skilled specialist instrumental Music Tutors who are reflective practitioners and receive ongoing peer support and mentoring. All tutors are fully DBS checked and have had OCR checks where relevant. This enables your pupils to access high-quality music lessons, that are fully supported by the Bristol Beacon education team. Please see our bursaries, discounts and fees policy for details about the discounts and bursaries that we provide for the students in your school.

Timetabling and administration of Instrumental Music Lessons

We can timetable the music lessons in your school for you through the parent pay and lesson management system, SpeedAdmin. This removes the financial and administrative burdens of managing instrument lessons in your school and means that we can timetable lessons and deal directly with parents for payments and enquiries. No more chasing parents! We charge a small timetabling fee directly to your school and then handle the rest. Please note, timetabling is done in blocks of 30 students per school. Please see our terms and conditions for details (including space and time requirements for your school).

Bristol Music Curriculum

Bring music to life in your school through our award-winning Bristol Music Curriculum. These plans are developed by outstanding music teachers across Bristol, for Bristol schools. Included in our newly updated curriculum are fully planned lessons, resources and pointers to trusted partners to ensure you are providing the best curriculum for your school. On signing up for a Bristol Beacon Schools Membership, you will receive a free set of our Musical Moments Cards and Rhythm Notation Cards which will also support music throughout out your school. You will also receive digital resources which can be used in conjunction with the cards and access to staff training to support their use.

**HIGH QUALITY
MUSIC LESSONS**

What's included

Singing Schools Programme

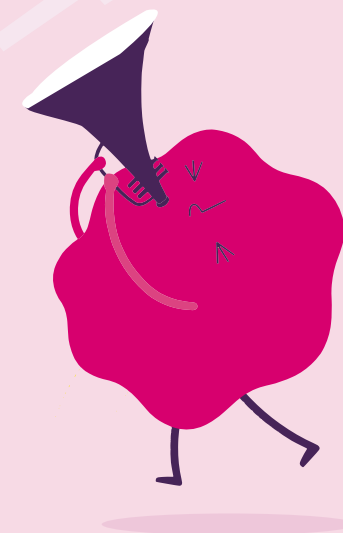
Singing in Bristol schools is vital not only for cohesion but also for the personal and social development and wellbeing of every pupil in your school. Bristol Beacon offers advice, training, assemblies and support to help you develop and maintain a robust and positive singing ethos in your school. Join with other schools to take part in mass participatory singing celebrations in our world-class performance space.

Continued Professional Development (CPD) for non-specialist and specialist teachers

Bristol Beacon runs an extensive programme of training throughout the school year. Developing expertise in your team is vital to supporting an ongoing musical culture and we offer a year-round training programme. This is led by our primary specialist team to support and further develop teacher confidence to lead music in your schools. Examples of this training include CPD for our Bristol Music Curriculum as well as collaborating with national partners such as the Royal Opera House, ABRSM and Sound and Music to roll out national initiatives, as well as exploring key stage specific curriculum progression and support with Ofsted Deep Dives.

Beacon Music Centre Sheet Music Library

You will also receive access to our extensive sheet music library at Beacon Music Centre. We have a large collection of classical music and singing scores (including musical theatre) which can be accessed through our Exams and Library Coordinator.



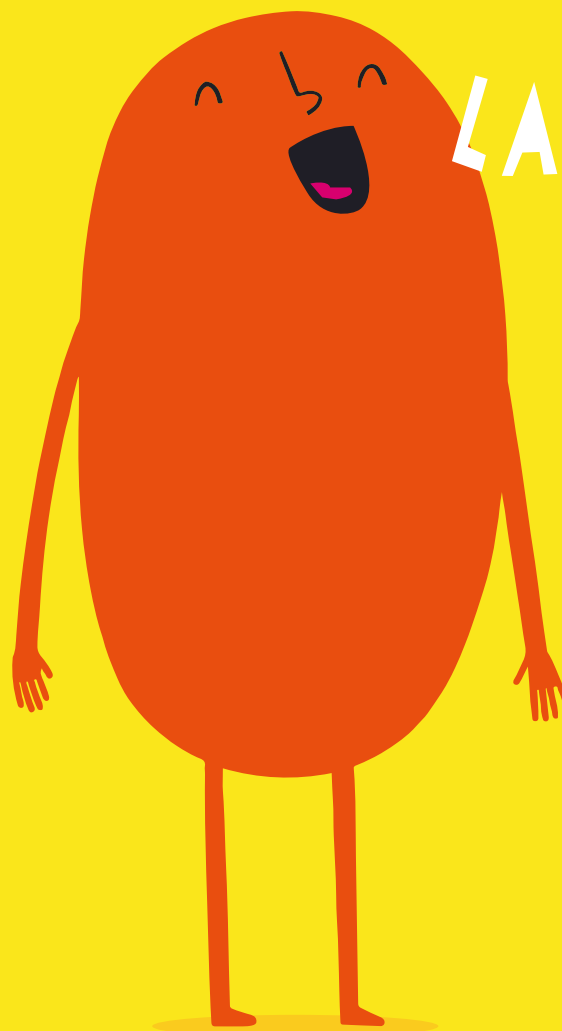
Whole Class Ensemble Tuition

Whole Class Ensemble Tuition (WCET)

WCET is available to all schools in the city and is subsidised for one KS2 year group. You can access this free 10-week programme without being members. Not only is this a fun way for children to learn about playing an instrument, but it also supports your school to meet the requirements of the National Music Curriculum.

Schools have a wide choice of instruments including steel pans, ukulele, samba, djembe drumming, wind band, woodwind, DooDs and TooTs, violin, brass, rock band, guitar and recorder. Membership schools can access a subsidised rate for WCET continuation to keep the music going following your first term.

Use the suggested programmes on the following pages to explore benefits of each of our WCET offers. Please use this as a guide when choosing an instrument that works for your school.



WCET: Suggested programmes at Years 3 and 4

Instrument

Ukulele

Learning the ukulele is a fun and engaging way that children can explore chord progressions, develop rhythmic skills and play as an ensemble. In this programme, children will be taught to play a variety of chords, use different common strumming patterns and master popular songs that they will be able to perform at the end of the programme. Students will develop their ability to follow written notation while also becoming more confident performers.

Recorder

Recorder playing allows children to explore the world of music staff notation while also learning the subtle art of playing a wind instrument. Our tutors make learning the recorder fun, with rhythm games, notation games and a fun selection of repertoire. Students will play together, but also develop the confidence to play on their own.

DooDs and TooTs

If your aim is to introduce your students to the world of wind playing, DooDs and TooTs are fun, accessible instruments designed for young learners. Students will explore the world of music staff notation while developing their performance skills. Full of fun repertoire, this is a wonderful programme!

Brass

Brass WCET is one of the most exciting programmes on offer. Ensemble playing is at the heart of brass playing, with these sessions being no different. Brass playing is accessible, fun and engaging for any young person. We also have additional offers from Brass Band England to kick-start brass playing in your school.

WCET: Suggested programmes at Years 3 and 4

Instrument

Violin

Violin WCET programmes can be very rewarding for young people, especially those completely new to instrumental playing. Starting by exploring beginner techniques such as plucking (pizzicato), students will explore fun and engaging repertoire while developing techniques that apply to all string instruments.

Djembe

A West African percussion staple, the Djembe is a fantastic instrument for developing students' rhythm skills. Students will not only learn many different rhythms by call and response, or layering them together in ensemble pieces, they will also learn different playing techniques to explore the different sounds (timbres) of the Djembe drums.

WCET: Suggested programmes at Years 5 and 6

Instrument

Wind Band

Wind Band is a programme that allows your students to learn both wind and brass instruments alongside each other. This programme is perfect for developing ensemble playing in your school. It also allows students the opportunity to progress comfortably into Bristol Beacon's other beginner ensembles such as our Sparks groups.

Rock Band

Alongside singing, with our Rock Band programme you can choose two instruments from guitar or keyboard, drums or bass guitar for your children to learn. Exploring rock and pop repertoire, your students will love this programme which allows them to be part of the band!

String Orchestra

Choosing either violin and cello, or violin and viola, this programme gives an insight into learning as part of a string orchestra. With fun and engaging repertoire, your students will feel an enormous sense of accomplishment as they practice and perform as an orchestra.

Brass

The brass programme for years 5 and 6 aim to stretch the young learners while also covering the basics of brass technique. As more confident musicians, your students will enjoy using their more developed musicianship skills as they learn how to play brass instruments. Brass Sparks is a wonderful group for your learners to progress to.

Samba

A Latin American staple, Samba is a fun and vibrant programme that develops so many key musical skills. With a clear leader, Samba bands are always focused, dynamic ensembles that bring joy to any setting. The programme highlights strong rhythmic skills, alongside ensemble playing.

WCET: Suggested programmes at Years 5 and 6

Instrument

Steelpans

If you are looking for a challenge for your learners, then look no further than steelpans! These instruments are deceptively challenging, but students always rise to the occasion. Exploring notation as well as percussion skills, this programme is a wonderful opportunity for your class to dive into instrumental learning.

Woodwind

In addition to Wind Band, we also offer woodwind programmes. Focusing specifically on the technical aspects of playing a woodwind instrument, this rewarding programme supports learners to read music, play as an ensemble and have fun doing it!

Guitar

We are delighted to offer whole class guitar to our schools. This programme works wonderfully alongside any vocal or popular music learning already happening within your school. Learning to read TAB, basic rhythms and generally making music together, your students will love learning the guitar together as an ensemble.

Whole Class Ensemble Tuition

WCET celebration

At the end of the academic year 23/24 all students who have participated in a WCET programme will be invited to join us to celebrate their achievements together. In this massed event, we will play common repertoire while also showcasing different programmes and their achievements. More information about this fantastic event will be released in January 2024.

WCET training for schools

This day course aims to provide non-music specialist classroom teachers the tools they need to be able to continue the learning of their students who have had a term of WCET taught by one of our specialists. In practical sessions we will work through the next steps for learning either the recorder or ukulele in Years 3 and 4. These courses will run at the beginning of terms 3 and 5.

Instrument demo workshops

Our instrument demo workshops and livestreamed workshops allow your students the opportunity to experience a diverse range of instruments, from violins to Clarion! We run relaxed instrument demos at Bristol Beacon and also demos that are livestreamed. This is a great way to introduce your students to lots of different instruments and can help to kick-start lesson uptake in your school.



**To find out more about becoming a Bristol Beacon
Musical School, please contact**

Chloe Hann

chloe.hann@bristolbeacon.org

0117 204 7140



Supported using public funding by



**ARTS COUNCIL
ENGLAND**

