

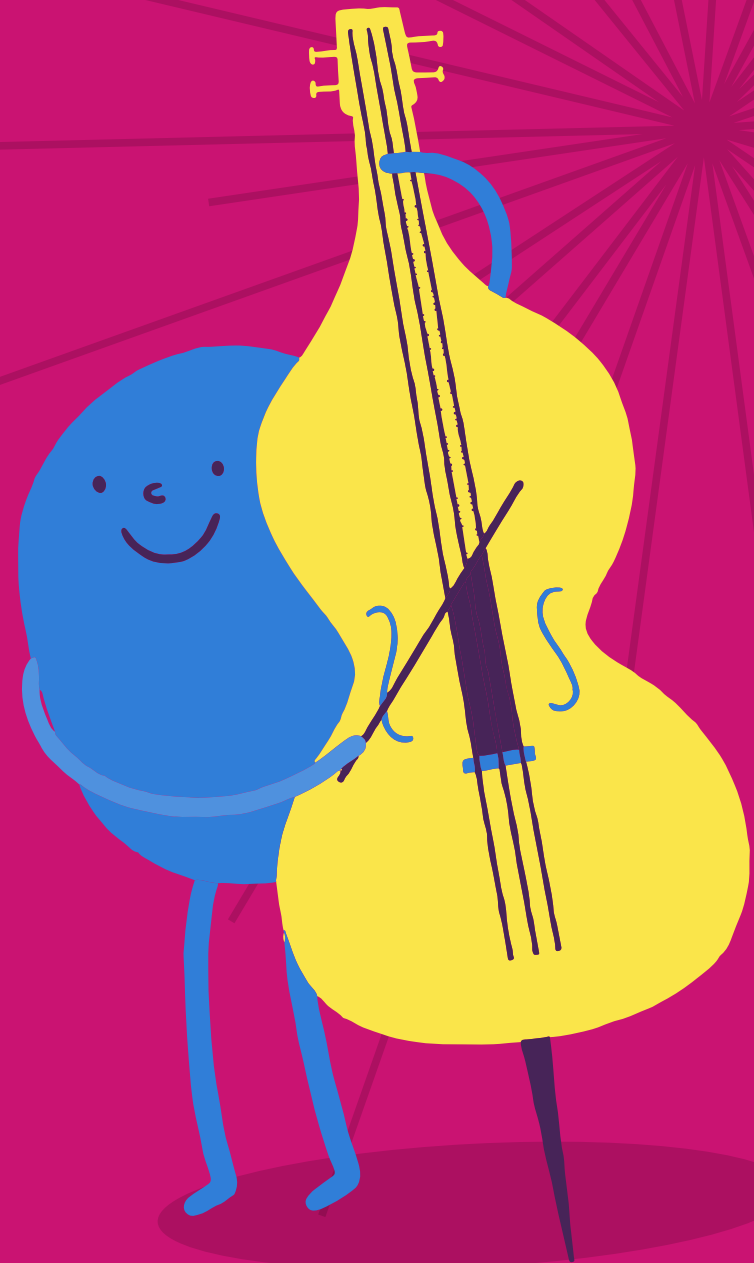
**BRISTOL  
BEACON**

**BUILD A CREATIVE COMMUNITY  
AND BECOME A**

# **BRISTOL BEACON MUSICAL SCHOOL**

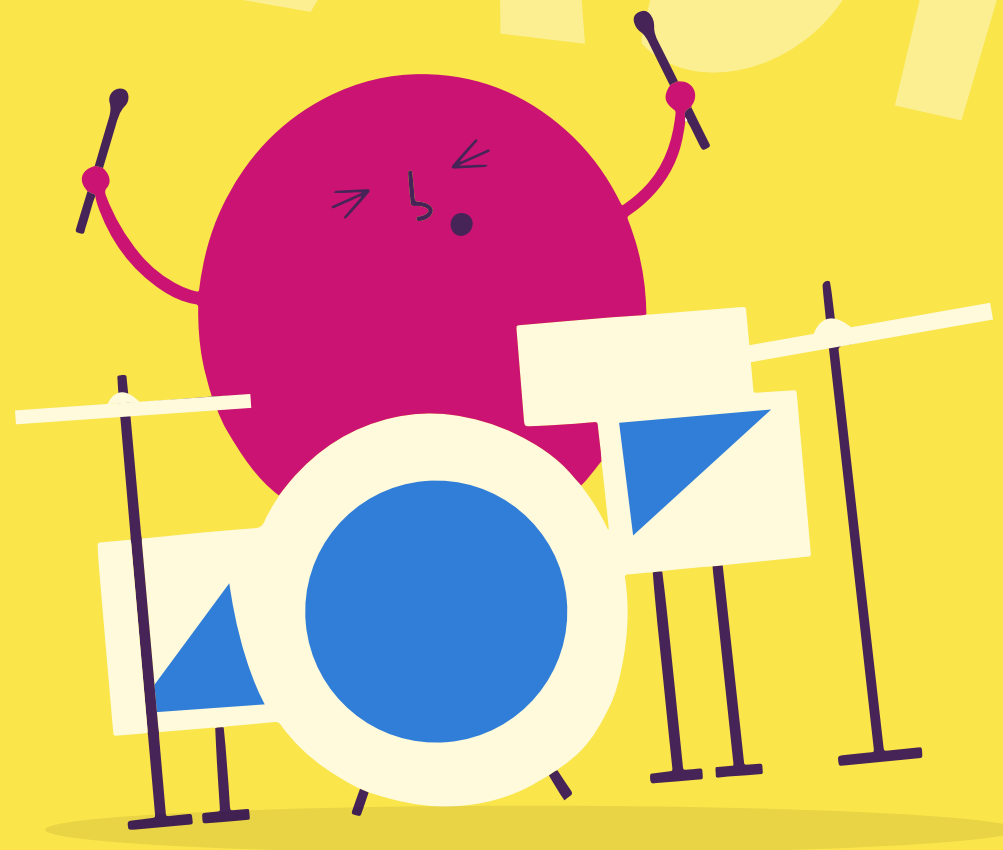
**Bristol Beacon Musical Schools  
Primary Membership 2024/25**

**NURTURE A COMMUNITY  
OF CREATIVE LEARNERS**



# BECOME A BRISTOL BEACON MUSICAL SCHOOL

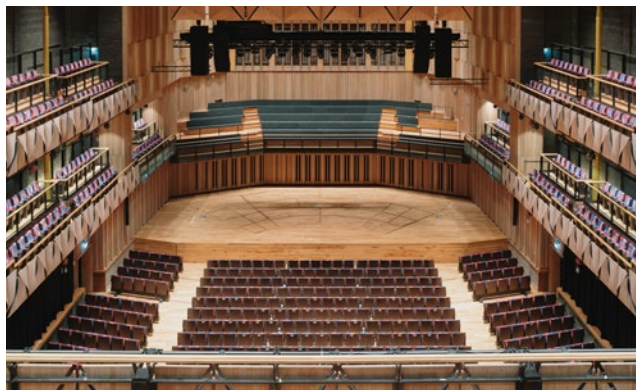
|  |    |
|--|----|
| <b>Bristol Beacon Musical<br/>Schools Membership</b> | 03 |
| <b>Membership at a glance</b>                        | 04 |
| <b>What's included</b>                               | 06 |
| <b>Whole Class Ensemble Tuition</b>                  | 08 |



# Become a Bristol Beacon Musical School

## What is the Bristol Beacon Musical Schools membership?

Whether you are already a musical school or just starting out on the journey, the Bristol Beacon Musical Schools membership aims to support all schools in the city to fully integrate music education into their curriculum. Our award-winning programme supports schools through a range of high-quality curriculum resources, enrichment activities and teacher training opportunities. We work closely with the Department for Education, Ofsted, Arts Council England and industry organisations across the music education sector to make sure we are at the cutting-edge of inclusive practice in musical teaching and learning.



## New for 2024/25

**Our programme is constantly developing in response to the needs of Bristol schools. This year the programme allows more opportunities to access performance in our brand-new hall, re-opened in November 2023 - we are so excited to welcome schools to our exciting new venue! We will be working with a host of new and existing partners to bring even more opportunities to your schools.**



We believe that music can support everyone to thrive musically, socially and personally. Our experienced and knowledgeable team is here to support you to create and maintain a thriving inclusive musical community that fosters a lifelong love of music. Being a Bristol Beacon Musical School means you will have access to the resources and tools needed to build cultural capital and bring music to life in your school in line with the National Curriculum..

**Adam Kent** Director of Creative Learning and Engagement



# At a glance: Bristol Beacon Musical Schools Primary Membership

## Included in membership

- Full access to the Bristol Beacon's Annual Schools' CPD Programme
- Free places at massed singing events held at Bristol Beacon performance spaces and across the city
- 10 weeks of Whole Class Ensemble Tuition (WCET)
- Attendance at a massed WCET Celebration event at Bristol Beacon
- WCET Instrument set
- Support with your school's Music Development Plan
- 1 Staff Meeting run by a member of the Bristol Beacon Hub team
- Full access to the Bristol Beacon curriculum including all digital resources, Musical Moment and Rhythm Notation Cards
- Opportunity to pilot brand new curriculum resources
- 1 x 30 min bespoke singing assembly run by a member of the Bristol Beacon Hub team with follow-up CPD
- Support with your school's singing strategy
- Attendance at an instrument demo workshop/access to livestreamed instrument demos in summer term
- Free access for music leads to use the Bristol Beacon sheet music library housed at Beacon Music Centre
- Access to workshops/events delivered by partners such as LSO, BSO, Benedetti Foundation and the BBC
- Discount on tickets to selected events/Bristol Beacon Orchestral Season concerts for students in Year 6



**Please note:** If you are a combined infant/primary school please apply for a Primary Membership, For separate infant schools please apply for an Infant Membership.

## At a glance: Membership pricing and add-ons

### Membership type

School size of 1-250 children

### Price

£360 annual membership fee

School size of 250-450 children

£465 annual membership fee

School size of 450+ children

£565 annual membership fee

### Add-on

Instrumental Music Lessons (without timetabling)\*

### Price

£44 per hour

Timetabling and administration of Instrumental Music Lessons

£60 per block of 20 pupils

WCET Continuation

£309 per class, per double term

WCET Training for Schools

£250 for 3 teachers

Bespoke workshops

£44 per hour

Lunchtime or afterschool choirs/ensembles

£44 per hour

Inset day (up to 5 hours)

£180

Additional staff meetings

£78 per meeting

1-day consultancy

£227

Bespoke CPD sessions

Price available upon request

\*We would recommend offering parents the following options: Individual lessons for 20 minutes/30 minutes, and small group lessons (2-4 students) for 30 minutes. 33 lessons are delivered across an academic year.

# What's included

## Instrumental Music Lessons (without timetabling)

We provide highly skilled specialist instrumental Music Tutors who are reflective practitioners and receive ongoing peer support and mentoring. All tutors are fully DBS checked and have had OCR checks where relevant. This enables your pupils to access high-quality music lessons, that are fully supported by the Bristol Beacon education team. Please see our bursaries, discounts and fees policy for details about the discounts and bursaries that we provide for the students in your school.

“ Everyone felt very welcome at the Bristol Beacon singing event, music leaders were sensitive and kind to children and allowed them to express themselves ”  
*Teacher in a Bristol Beacon Musical School*

## Timetabling and administration of Instrumental Music Lessons

We can timetable the music lessons in your school for you through the parent pay and lesson management system, SpeedAdmin. This removes the financial and administrative burdens of managing instrument lessons in your school and means that we can timetable lessons and deal directly with parents for payments and enquiries. No more chasing parents! Please see our remissions policy for details about the discounts and bursaries that we provide for the students in your school. We will also manage sending yearly reports to your students in the summer term. We charge a small timetabling fee directly to your school and then handle the rest. Please note, timetabling is done in blocks of 20 students per school. Please see our terms and conditions for details (including space and time requirements for your school).

## Bristol Music Curriculum

Bring music to life in your school using our award-winning Bristol Music Curriculum. Support confident use of musical language throughout your school with our short-burst Musical Moments cards – complete with full digital resource pack and complimentary in-school staff training. Develop reading and ways into composition using our Rhythm Notation Cards. As our new updated curriculum begins to roll out, you will have access to fully planned lessons including slide decks, resources, and full progression documents to ensure you are providing a curriculum that is broad, ambitious and rigorously planned for clear progression. Curriculum content is now designed with links to continuous provision in EYFS and Year 1.

**HIGH QUALITY  
MUSIC LESSONS**



# What's included

## Singing Schools Programme

Singing in schools is hugely joyful and vital for the personal and social development and wellbeing of all pupils. We know that singing benefits mental health by supporting emotional regulation and serving as a positive release mechanism. Singing together in assemblies, choirs and classrooms is a powerful tool for bonding as well as for endorphin release. Bristol Beacon offers training and resources for assemblies, choirs, and classroom singing to help you develop and maintain a joyful, robust and positive singing ethos in your school. We also support you to be able to join with schools across the city in massed singing celebrations in our world-class performance space.

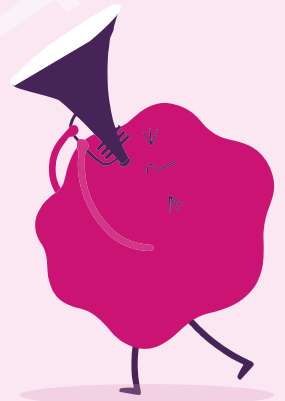
“Your enthusiasm and subject knowledge is just magnificent and I have been utterly inspired working with you over the past couple of years”  
*Teacher in a Bristol Beacon Musical School*

## Continued Professional Development (CPD) for non-specialist and specialist teachers

Bristol Beacon runs a varied CPD programme throughout the school year. Developing expertise in your team is essential to supporting an ongoing musical culture, and our training is always in response to what schools tell us they'd like support with. Training is led by our primary specialist team to support and further develop teachers' confidence to lead music well in your schools.



There is training for Deep Dives, Music Development Plans, Singing Strategies, Curriculum Development; as well as collaborations with our national partners including Royal Opera House, ABRSM, Bournemouth Symphony Orchestra, and Sound & Music enabling Bristol schools to be part of national initiatives.



# What's included

## Access to workshops/ events delivered by partners

Creating partnerships with organisations across the UK is an integral part of Bristol Beacon's work. In academic year 23/24, we worked with the Benedetti Foundation, Bournemouth Symphony Orchestra, London Symphony Orchestra and many others! These organisations create amazing opportunities for your young people, whether it is a workshop at Bristol Beacon or a small and intimate gig with an orchestra! The possibilities are endless! Some partners we are working with this year include London Symphony Orchestra, Bournemouth Symphony Orchestra, and a host of BBC events including BBC National Orchestra of Wales and BBC NOW.

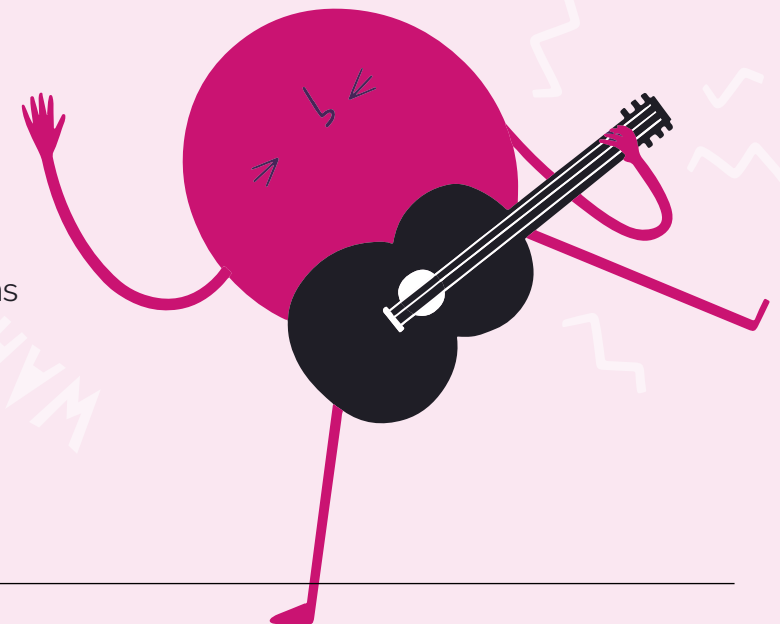
Free events will be planned for whole classes as well as your pupils who learn instruments in small groups and 1-2-1.

## Instrument demo workshops

Our instrument demo workshops, and livestreamed workshops allow your students the opportunity to experience a diverse range of instruments, from violins to Clarion! We run relaxed instrument demos at Bristol Beacon and also demos that are livestreamed in the summer term. This is a great way to introduce your students to lots of different instruments and can help to kickstart lesson uptake in your school!

## Beacon Music Centre Sheet Music Library

You will also automatically become a member of our extensive sheet music library at Beacon Music Centre. We have a large collection of classical music and singing scores (including musical theatre) which can be accessed through our Exams and Library Coordinator.





# Whole Class Ensemble Tuition

## Whole Class Ensemble Tuition (WCET)

WCET is available to all schools in the city and is subsidised for one KS2 year group. You can access this free 10-week programme without becoming a member. Not only is this a fun way for children to learn about playing an instrument, but it also supports your school to meet the requirements of the National Music Curriculum.

Schools have a wide choice of instruments including steel pans, ukulele, samba, djembe drumming, wind band, woodwind, DooDs and TooTs, violin, brass, rock band and recorder. Membership schools can access a subsidised rate for WCET continuation to keep the music going following your first term.

Use the suggested programmes on the following pages to explore the benefits of each of our WCET offers. Please use this as a guide when choosing an instrument that works for your school.

## WCET celebration

At the end of the academic year 24/25 all students who have participated in a WCET programme will be invited to join us to celebrate their achievements together. In this massed event, we will play common repertoire while also showcasing different programmes and their achievements. More information about this fantastic event will be released in January 2025.



## WCET: Suggested programmes at Years 3 and 4

### Instrument

---

#### Ukulele

Learning the ukulele is a fun and engaging way that children can explore chord progressions, develop rhythmic skills and play as an ensemble. In this programme, children will be taught to play a variety of chords, use different common strumming patterns and master popular songs that they will be able to perform at the end of the programme. Students will develop their ability to follow written notation while also becoming more confident performers.

---

#### Recorder

Recorder playing allows children to explore the world of music staff notation while also learning the subtle art of playing a wind instrument. Our tutors make learning the recorder fun, with rhythm games, notation games and a fun selection of repertoire. Students will play together, but also develop the confidence to play on their own.

---

#### DooDs and TooTs

If your aim is to introduce your students to the world of wind playing, DooDs and TooTs are fun, accessible instruments designed for young learners. Students will explore the world of music staff notation while developing their performance skills. Full of fun repertoire, this is a wonderful programme!

---

#### Brass

Brass WCET is one of the most exciting programmes on offer. Ensemble playing is at the heart of brass playing, with these sessions being no different. Brass playing is accessible, fun and engaging for any young person. We also have additional offers from Brass Band England to kick-start brass playing in your school.

---

## WCET: Suggested programmes at Years 3 and 4

### Instrument

#### Violin

Violin WCET programmes can be very rewarding for young people, especially those completely new to instrumental playing. Starting by exploring beginner techniques such as plucking (pizzicato), students will explore fun and engaging repertoire while developing techniques that apply to all string instruments.

#### Djembe

A West African percussion staple, the Djembe is a fantastic instrument for developing students' rhythm skills. Students will not only learn many different rhythms by call and response, or layering them together in ensemble pieces, they will also learn different playing techniques to explore the different sounds (timbres) of the Djembe drums.

**FLEXIBLE LEARNING**



## WCET: Suggested programmes at Years 5 and 6

### Instrument

---

#### Wind Band

Wind Band is a programme that allows your students to learn both wind and brass instruments alongside each other. This programme is perfect for developing ensemble playing in your school. It also allows students the opportunity to progress comfortably into Bristol Beacon's other beginner ensembles such as our Sparks groups.

---

#### Rock Band

Alongside singing, with our Rock Band programme you can choose two instruments from guitar or keyboard, drums or bass guitar for your children to learn. Exploring rock and pop repertoire, your students will love this programme which allows them to be part of the band!

---

#### Brass

The Brass programme for years 5 and 6 aim to stretch the young learners whilst also covering the basics of brass technique. As more confident musicians, your students will enjoy using their more developed musicianship skills as they learn how to play brass instruments. Brass Sparks is a wonderful group for your learners to progress to.

---

#### Samba

A Latin American staple, Samba is a fun and vibrant programme that develops so many key musical skills. With a clear leader, Samba bands are always focused, dynamic ensembles that bring joy to any setting. The programme highlights strong rhythmic skills, alongside ensemble playing.

---

#### Steelpans

If you are looking for a challenge for your learners, then look no further than steelpans! These instruments are deceptively challenging, but students always rise to the occasion. Exploring notation as well as percussion skills, this programme is a wonderful opportunity for your class to dive into instrumental learning.

---

#### Woodwind

In addition to Wind Band, we also offer woodwind programmes. Focusing specifically on the technical aspects of playing a woodwind instrument, this rewarding programme supports learners to read music, play as an ensemble and have fun doing it.

---

To find out more about becoming  
a Bristol Beacon Musical School, contact  
**Chloe Hann**  
**Schools Relationship Manager**  
[chloe.hann@bristolbeacon.org](mailto:chloe.hann@bristolbeacon.org)  
0117 204 7140



Supported using public funding by



**ARTS COUNCIL  
ENGLAND**

Images © Tim Crocker | Laura Palmer | Giulia Spadafora / Soul Media  
Design: Loop Studio