



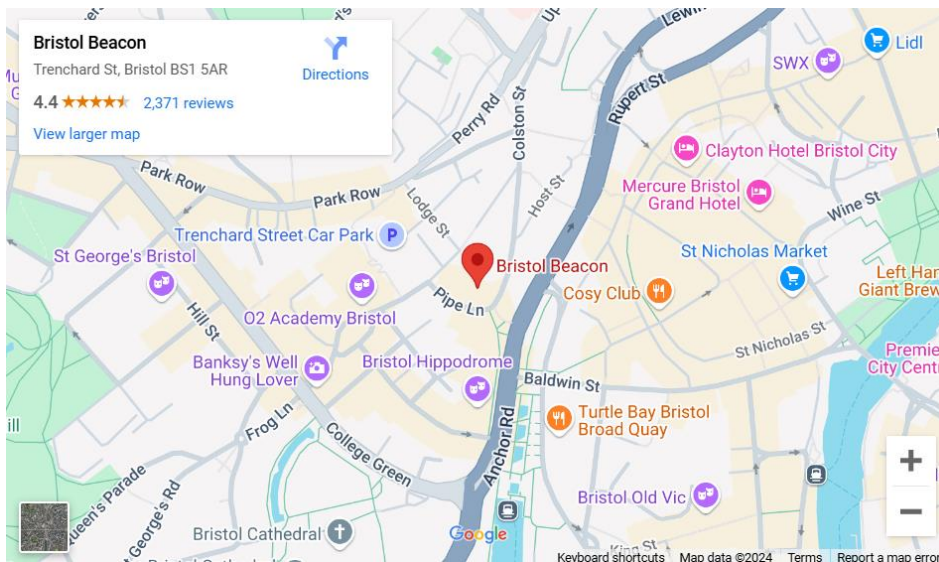
Dear Massive Mozart Workshop Participant,

We look forward to welcoming you to Bristol Beacon on Saturday 23 November for Massive Mozart; our big scratch singalong of Mozart's Requiem.

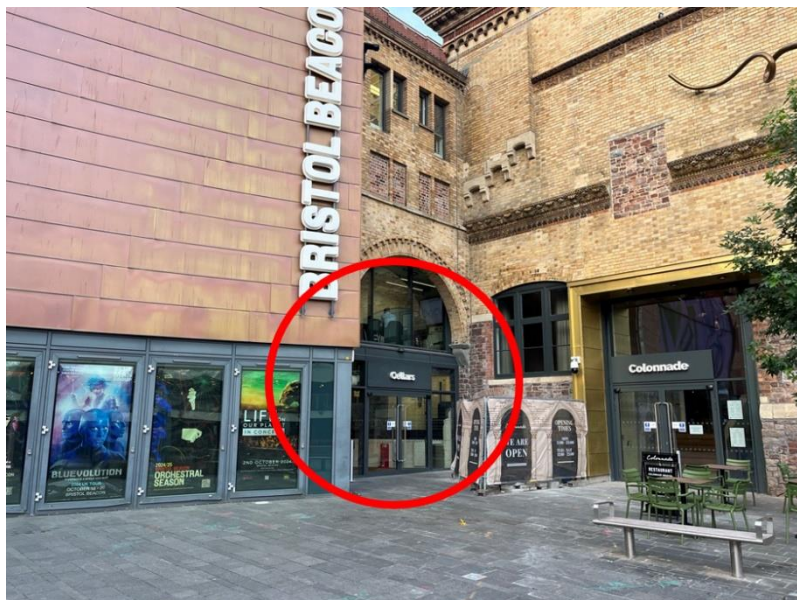
Below you will find all the information you need to prepare yourself for the day.

**When:** Saturday 23 November 2024

**Where:** Massive Mozart will take place at Bristol Beacon. Our full address is: Bristol Beacon, Trenchard St, Bristol BS1 5AR



Please arrive via the **Cellars** entrance on Colston Street. This entrance looks like this:



Please visit our website for information about [how to get](#) to Bristol Beacon.

For those **driving**, [Trenchard Street multi-storey car park](#) is 50m away directly behind Bristol Beacon. For those on **bikes**, racks are available on Trenchard street, Colston Street, and on the city centre promenade. If you take the bus, there is a city centre bus stop is 250m from Bristol Beacon where most bus services stop.

### Access:

Our building and spaces are fully accessible and we look to create events that are inclusive of all needs. We will accommodate any specific needs you have told us in the info form, but if there is anything else you would like to tell us about, please contact [community@bristolbeacon.org](mailto:community@bristolbeacon.org)

### Timings and how the day will run:

You are welcome to arrive any time from **9am**.

On arrival we will check you in, provide you with your musical score and there will be time for a quick hot drink. We will also make sure you are happy with the vocal part you have told us you'd like to sing.

The planned schedule for the day is as follows (this is subject to change):

Registration	9am - 9.30am	
Welcome and warm up	9.30am - 10am	Beacon Hall
Session 1 (All together)	10am - 11am	Beacon Hall
Break	11am - 11.15pm	
Session 2 (Sectionals)	11.15am - 12.30pm	
Lunch	12.30pm - 1.30pm	
Session 3 (All together)	1.30pm - 2.30pm	Beacon Hall
Break	2.30pm - 2.45pm	
Dress rehearsal with orchestra	2.45pm - 4pm	
Break	4pm - 5.30pm	
On stage	5.30pm	
Concert	6pm - 7pm	

### Who's who?

The event will be led and conducted by David Ogden. After lunch, we will be joined by Bristol Ensemble and four soloists. You can find out more about our professional artists [here](#). There will be lots of friendly extra people around

wearing blue t-shirts, so please come and speak to us at any point of the day if you have a question.

### **Music and preparation:**

We will be able to provide everyone with the music for Mozart's Requiem. If you would like to bring your own please do so. The Novello edition would be preferred.

We will be teaching the music from the score, so we like to encourage everyone to familiarise yourselves with your part by singing along with the rehearsal tracks. You can find these via the links on our [website](#).

### **What to bring:**

- A water bottle. We will have plenty of water stations across the building for you to refill. Please don't bring a water bottle for the actual concert.
- Packed lunch and snacks. We will have breaks and hot drinks available throughout the day, and a 1hr break for lunch.
- Any personal items left in rehearsal spaces during the event are left at your own risk, so we would encourage you to only bring what you absolutely need. There will be a shared cloakroom space for you to leave your bags in the Weston Stage (sopranos and altos) and Sound Studios (tenor and bass) during the concert.
- You will be with us all day, so don't forget to bring anything else you need to be comfortable.

### **Refreshments:**

We will provide you with hot drinks and water throughout the day. Bristol Loaf, the café and Colonnade the restaurant on the Lower Ground Floor will be open. Please note that Bristol Beacon will be very busy on the 23 November as we are hosting the [Made in Bristol](#) gift fair throughout the day.

### **Dress:**

Please wear whatever you feel comfortable in for workshop. For the concert, we would like to encourage you all to wear a bright block colour top.

## Concert:

The concert element of the day will start at 6pm. We expect to be finished by 7pm. There will be no interval. Any friends or family wishing to attend the concert will need to purchase a ticket via the Bristol Beacon [website](#) or at the Box Office on the night of the concert.

## Contacting Us:

If you still have any unanswered questions, please do not hesitate to contact us at [community@bristolbeacon.org](mailto:community@bristolbeacon.org) Please put 'MM' in the subject line so we can answer quickly.

If you are ill or unable to make it on the day, please also email this address.