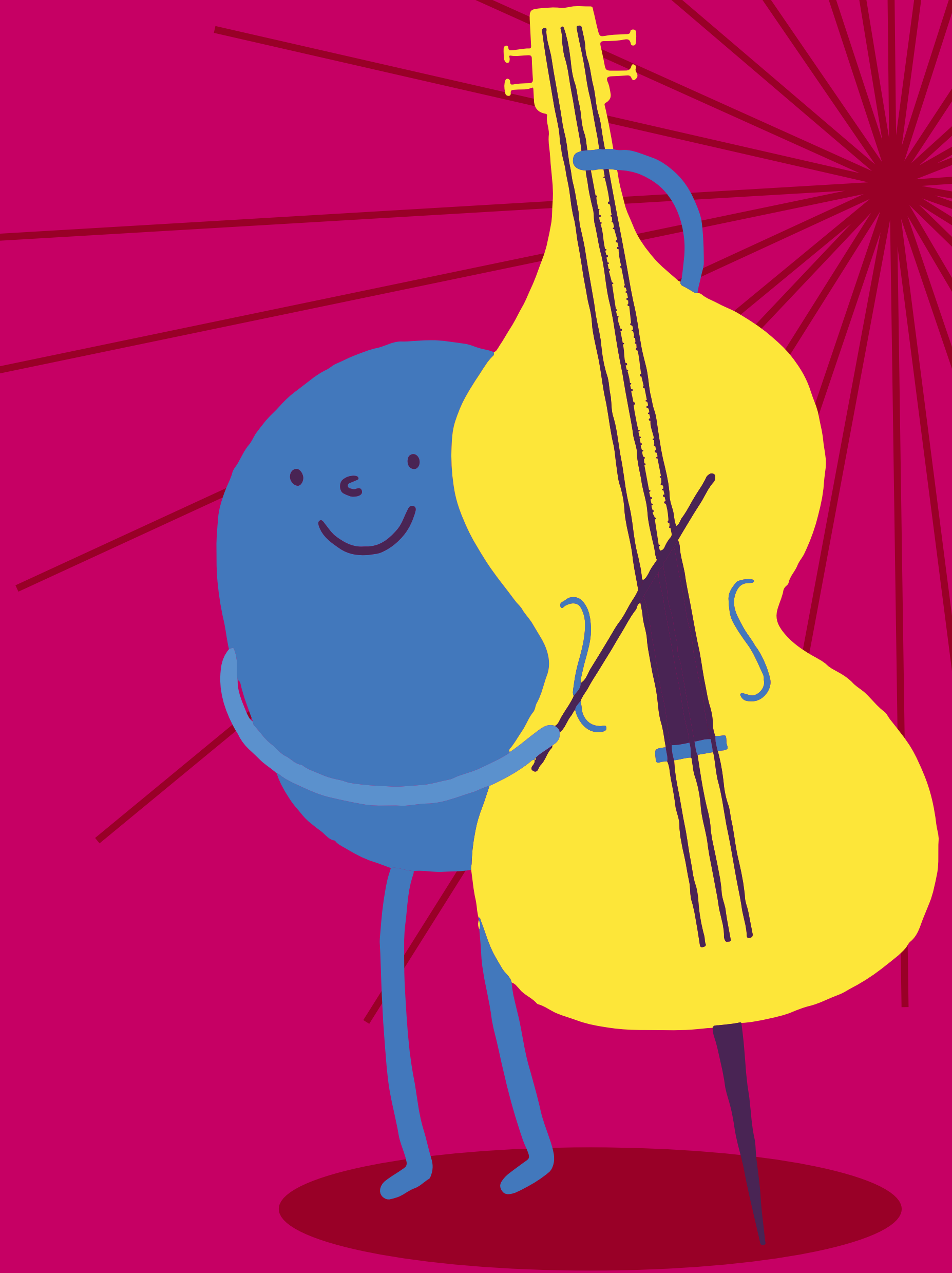


**BRISTOL
BEACON**

Build a creative community
and become a

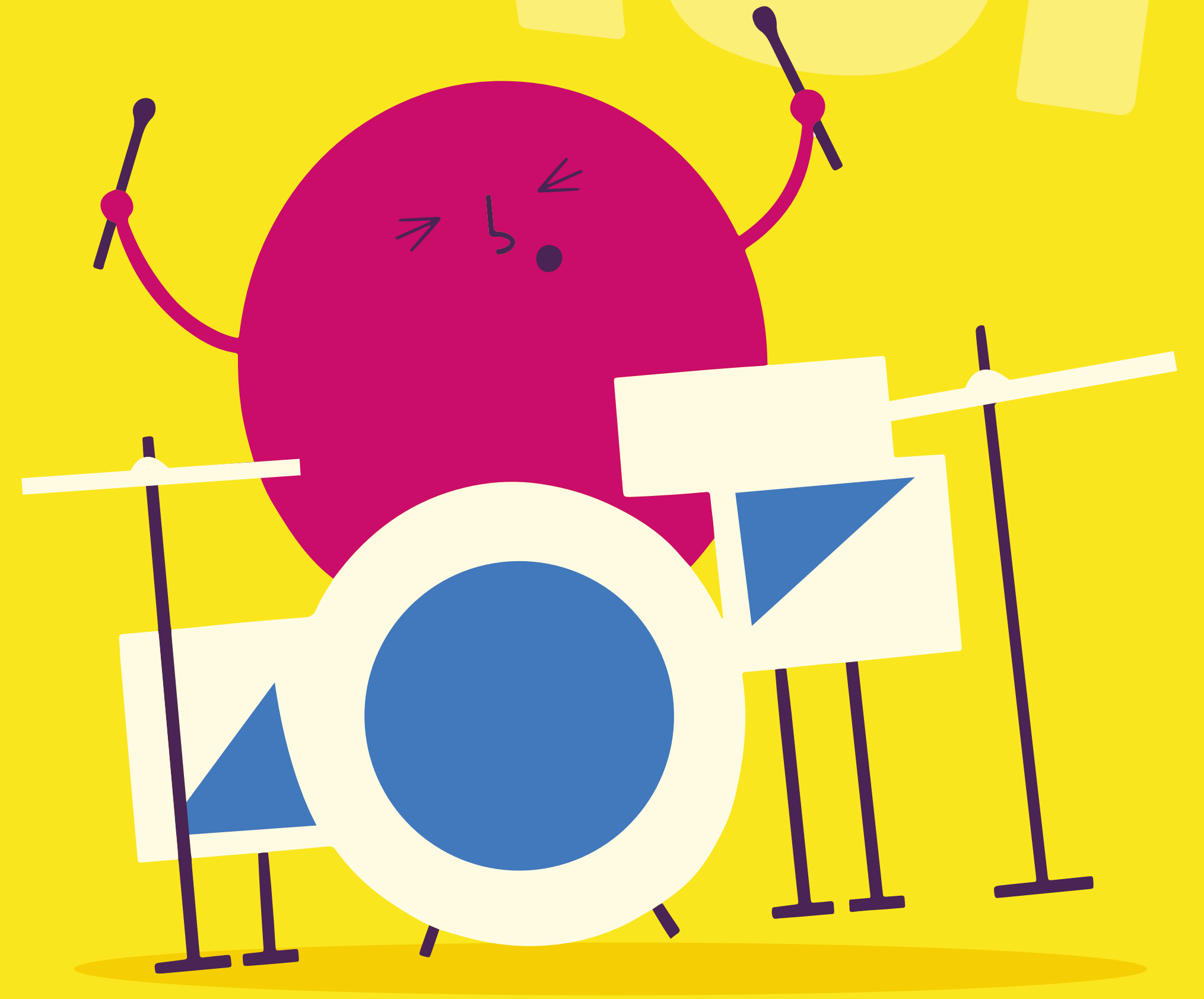
BRISTOL BEACON MUSICAL SCHOOL



Bristol Beacon Musical Schools Primary Membership 2025/26

GRASSH

Bristol Beacon Musical Schools Membership	03
Membership at a glance	04
What's included	06
Whole Class Ensemble Tuition	08



Become a Bristol Beacon Musical School

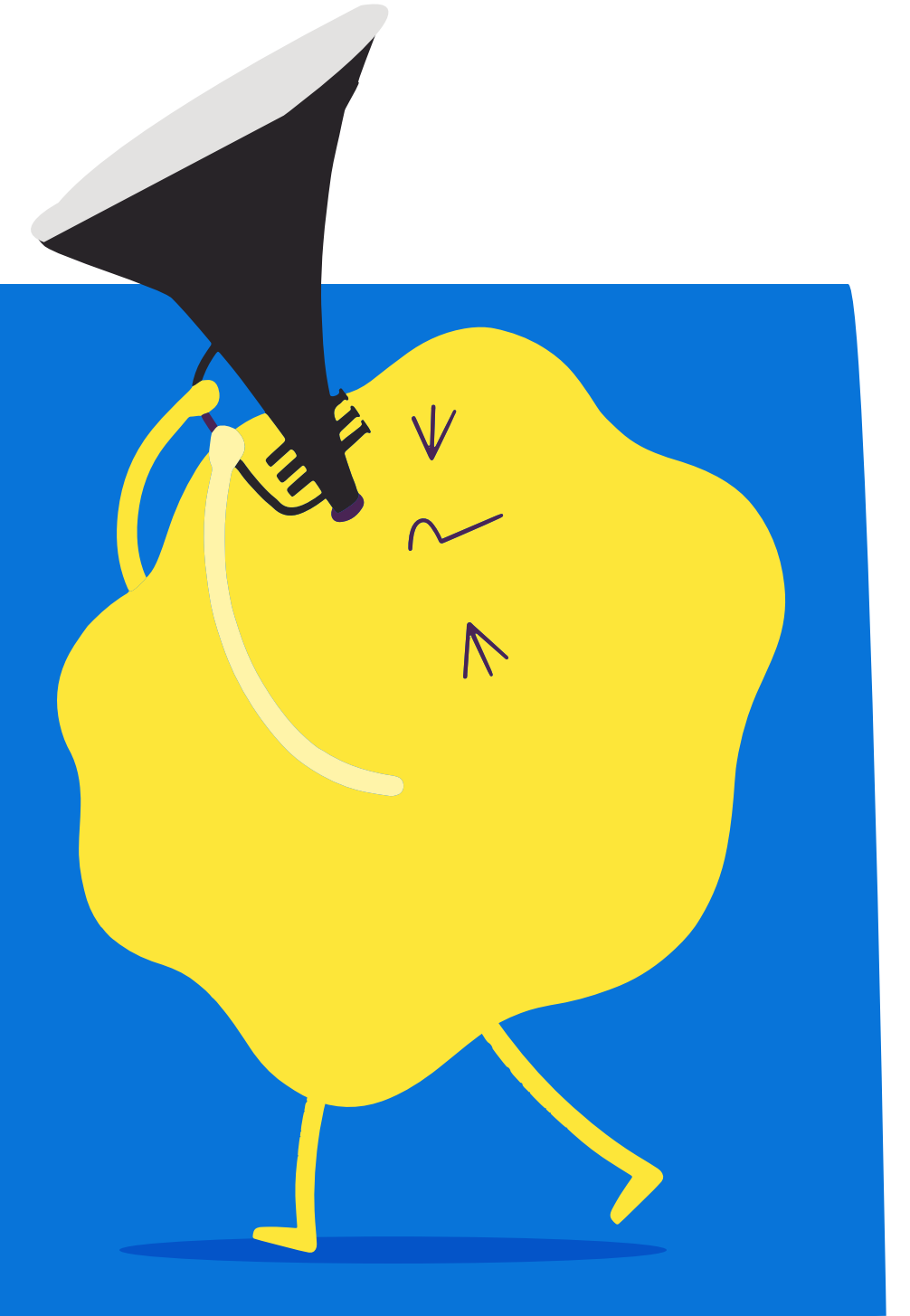
What is the Bristol Beacon Musical Schools membership?

Whether you are already a musical school or just starting out on the journey, the Bristol Beacon Musical Schools membership aims to support all schools in the city to fully integrate music education into their curriculum. Our award-winning programme supports schools through a range of high-quality curriculum resources, enrichment activities and teacher training opportunities. We work closely with the Department for Education, Ofsted, Arts Council England and industry organisations across the music education sector to make sure we are at the cutting-edge of inclusive practice in musical teaching and learning.



New for 2025/2026

Our programme is constantly developing in response to the needs of Bristol schools. This year the programme allows more opportunities to access performance in our brand-new hall, re-opened in November 2023 - we are so excited to welcome schools to our exciting new venue! We will be working with a host of new and existing partners to bring even more opportunities to your schools.



We believe that music can support everyone to thrive musically, socially and personally. Our experienced and knowledgeable team is here to support you to create and maintain a thriving inclusive musical community that fosters a lifelong love of music. Being a Bristol Beacon Musical School means you will have access to the resources and tools needed to build cultural capital and bring music to life in your school in line with the National Curriculum.

Adam Kent Director of Creative Learning and Engagement



At a glance: Bristol Beacon Musical Schools Primary Membership

Included in membership

- Full access to the Bristol Beacon's Annual Schools' CPD Programme
- Free places at massed singing events held at Bristol Beacon performance spaces and across the city
- Attendance at a massed WCET Celebration event at Bristol Beacon
- 10 weeks of Whole Class Ensemble Tuition (WCET) and an instrument set
- Support with your school's Musical Development Plan
- 1 Staff Meeting run by a member of the Bristol Beacon Hub team
- Full access to the Bristol Beacon curriculum including all digital resources, Musical Moment and Rhythm Notation cards
- Opportunity to pilot brand new curriculum resources
- 1 x 30 min bespoke singing assembly run by a member of the Bristol Beacon Hub team with follow-up CPD
- Support with your school's singing strategy
- Free access for music leads to use the sheet music library housed at Beacon Music Centre
- Access to workshops/events delivered by partners such as LSO, BSO, Benedetti Foundation and the BBC
- Discount on tickets to selected events/Bristol Beacon Classical Series concerts for students in Year 6



Please note: If you are a combined infant/primary school please apply for a Primary Membership, For separate infant schools please apply for an Infant Membership.

At a glance: Membership pricing & add-ons

Membership type

School size of 1-250 children

School size of 250-450 children

School size of 450+ children

Price

£370 annual membership fee

£479 annual membership fee

£582 annual membership fee

Add-on

Instrumental Music Lessons (without timetabling)*

Timetabling and administration of Instrumental Music Lessons

WCET Continuation

Bespoke workshops

Lunchtime or afterschool choirs/ensembles

Inset day (up to 5 hours)

Additional staff meetings

1-day consultancy

Bespoke CPD sessions

Price

£45 per hour

£60 per block of 20 pupils

£318 per class, per double term

£45 per hour

£45 per hour

£185

£80 per meeting

£233

Price available upon request



*We would recommend offering parents the following options: Individual lessons for 20 minutes/30 minutes, and small group lessons (2-4 students) for 30 minutes. 33 lessons are delivered across an academic year.

What's included

Instrumental Music Lessons (without timetabling)

We provide highly skilled specialist instrumental Music Tutors who are reflective practitioners and receive ongoing peer support and mentoring. All tutors are fully DBS checked and have had OCR checks where relevant. This enables your pupils to access high-quality music lessons, that are fully supported by the Bristol Beacon education team. Please see our bursaries, discounts and fees policy for details about the discounts and bursaries that we provide for the students in your school.

“Your enthusiasm and subject knowledge is just magnificent and I have been utterly inspired working with you over the past couple of years”

Teacher in a Bristol Beacon
Music School

Timetabling and administration of Instrumental Music Lessons

We can timetable the music lessons in your school for you through the parent pay and lesson management system, SpeedAdmin. This removes the financial and administrative burdens of managing instrument lessons in your school and means that we can timetable lessons and deal directly with parents for payments and enquiries. No more chasing parents! We charge a small timetabling fee directly to your school and then handle the rest. Please note, timetabling is done in blocks of 20 students per school. Please see our terms and conditions for details (including space and time requirements for your school).

Bristol Music Curriculum

Bring music to life in your school using our award-winning Bristol Music Curriculum. Support confident use of musical language throughout your school with our short-burst Musical Moments cards – complete with full digital resource pack and complimentary in-school staff training. Develop reading and ways into composition using our Rhythm Notation Cards. As our new updated curriculum begins to roll out, you will have access to fully planned lessons including slide decks, resources, and full progression documents to ensure you are providing a curriculum that is broad, ambitious and rigorously planned for clear progression. Curriculum content is now designed with links to continuous provision in EYFS and Year 1.

**HIGH QUALITY
MUSIC LESSONS**

What's included

Singing Schools Programme

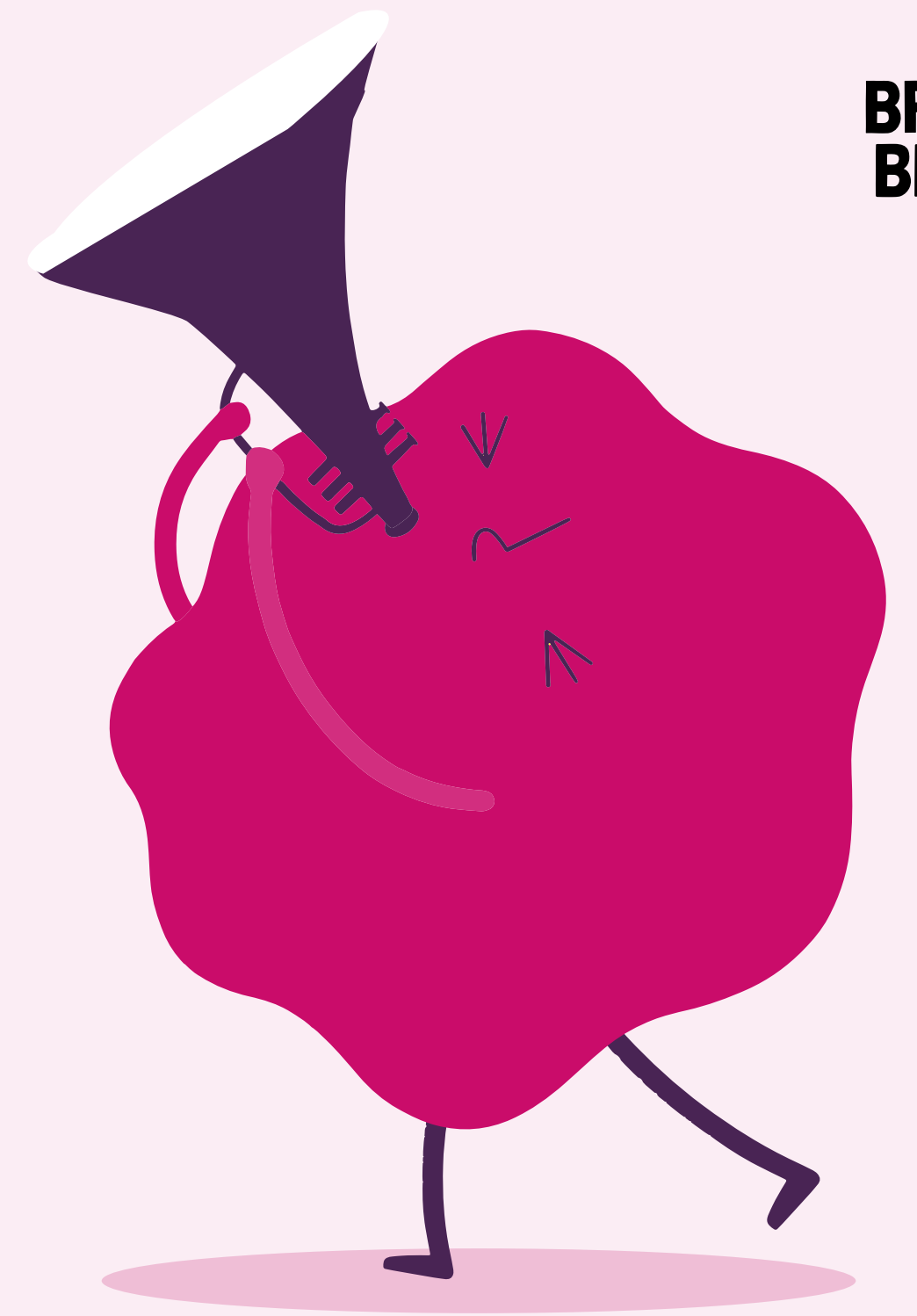
Singing in schools is hugely joyful and vital for the personal and social development and wellbeing of all pupils. We know that singing benefits mental health by supporting emotional regulation and serving as a positive release mechanism. Singing together in assemblies, choirs and classrooms is a powerful tool for bonding as well as for endorphin release. Bristol Beacon offers training and resources for assemblies, choirs, and classroom singing to help you develop and maintain a joyful, robust and positive singing ethos in your school. We also support you to be able to join with schools across the city in massed singing celebrations in our world-class performance space.

"Really great interactive sessions with a clear way of setting up singing as a strand to show progression."

Teacher in a Bristol Beacon
Music School

Continued Professional Development (CPD) for non-specialist and specialist teachers

Bristol Beacon runs a varied CPD programme throughout the school year. Developing expertise in your team is essential to supporting an ongoing musical culture, and our training is always in response to what schools tell us they'd like support with. Training is led by our primary specialist team to support and further develop teachers' confidence to lead music well in your schools. There is training for Deep Dives, Music Development Plans, Singing Strategies, Curriculum Development; as well as collaborations with our national partners including Royal Opera House, ABRSM, Bournemouth Symphony Orchestra, and Sound & Music enabling Bristol schools to be part of national initiatives.



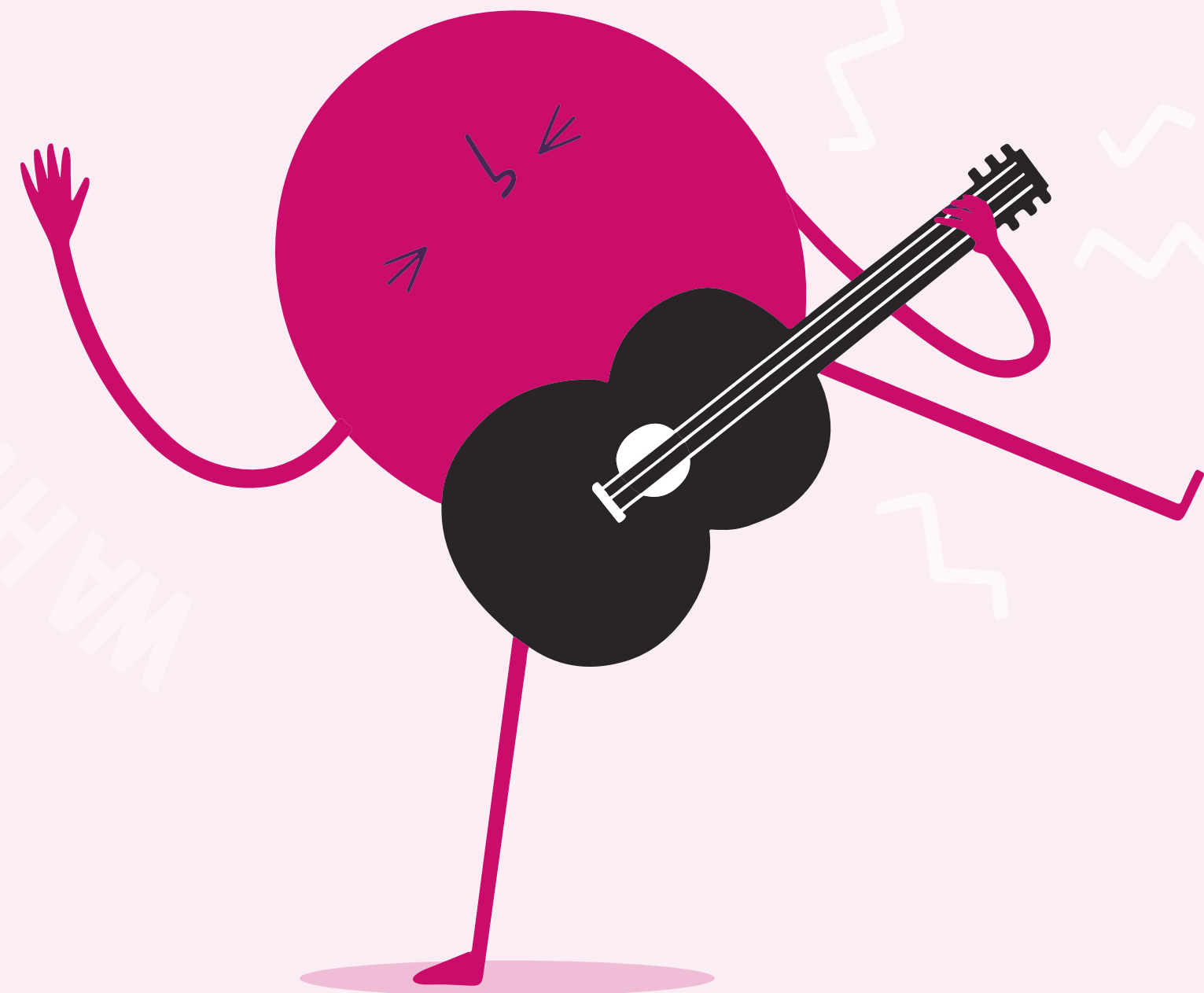
What's included

Access to workshops/events delivered by partners

Creating partnerships with organisations across the UK is an integral part of Bristol Beacon's work. In academic year 24/25, we worked with the Kanneh-Masons, BSO, LSO, and many others! These organisations create amazing opportunities for your young people, whether it is a workshop at Bristol Beacon or a small and intimate gig with an orchestra! The possibilities are endless! Some partners we are working with this year include London Symphony Orchestra, Bournemouth Symphony Orchestra, Royal Ballet and Opera, Welsh National Opera, Young Voices and the BBC.

Beacon Music Centre Sheet Music Library

You will also automatically become a member of our extensive sheet music library at Beacon Music Centre. We have a large collection of classical music and singing scores (including musical theatre) which can be accessed through our Exams and Library Coordinator.



Whole Class Ensemble Tuition (WCET)

Whole Class Ensemble Tuition (WCET)

WCET is available to all schools in the city and is subsidised for one KS2 year group. You can access this free 10-week programme without becoming a member. Not only is this a fun way for children to learn to play an instrument, but it also supports you to meet the requirements of the National Curriculum, and the National Plan for Music Education by helping to develop your School Ensemble. Bristol Beacon is delighted to remind you that Membership schools can access a subsidised rate for WCET continuation to keep the music going after your first 10 weeks.

Schools have a wide choice of instruments covering Percussion (steel pans, samba, djembe), traditional Orchestral instruments (woodwind, violin and brass) to Popular options (ukulele and rock band). Please choose carefully, being mindful that some options require your pupils to have already developed some technical and musical skills. Use the recommended age-appropriate programmes on the following pages to explore the

benefits of each of our WCET offers. (For example, if you envisage WCET fitting into your Music curriculum to help teach staff notation, please note that some options, such as ukulele, generally use TAB (guitar), rather than staff in the first 10 weeks. To develop the reading of staff notation, we'd recommend an Orchestral choice.)

Please use this as a guide when choosing an instrument that works for your school and fit in best with your curriculum lessons.

WCET Celebration

At the end of each course, all classes who have participated in a WCET programme will be invited to celebrate their achievements together. In massed events throughout the year, classes will be invited to share performances and join in playing common repertoire. Further details will be sent out before you start your WCET programme.



WCET: Suggested programmed at Years 3 & 4

Instrument

Djembe

A West African percussion staple, the djembe is a fantastic instrument for developing students' rhythm skills. With this highly inclusive and accessible instruments, Pupils will not only learn many different rhythms by call and response, or layering them together in ensemble pieces, they will also learn different playing techniques to explore the different timbres of the djembe.

Recorder

Recorder playing allows children to explore the world of simple music staff notation while also introducing the subtle art of playing a wind instrument. Our tutors make learning the recorder fun, with rhythm games, notation games and a fun selection of repertoire. Pupils will play together, but also develop the confidence to play on their own

Brass

Brass WCET is one of the most exciting programmes on offer. Ensemble playing is at the heart of brass playing, with these sessions being no different. Brass playing is accessible, fun and engaging for any young person. We also have additional offers from Brass Band England to kick-start brass playing in your school.

Violin

Violin WCET can be very rewarding for pupils, especially those new to instrumental playing. Starting by exploring beginner techniques such as plucking (pizzicato), pupils will explore fun and engaging repertoire while developing techniques that apply to all string instruments.

WCET: Suggested programmed at Years 3 & 4

Instrument

DooDs and TooTs

If your aim is to develop your pupils playing in the world of woodwind, DooDs (simplified clarinets) and TooTs (simplified flutes) are accessible instruments designed for young learners. Pupils will explore music staff notation while developing their performance skills. Full of fun repertoire, this is a wonderful new offer. (We recommend that your pupils have some experience playing recorders before starting on DooDs and Toots.)

Ukulele

Learning the ukulele is a fun and engaging way that pupils can explore chord progressions, develop rhythmic skills and play as an ensemble. In this programme, pupils will be taught to play a variety of chords, use different common strumming patterns and master popular songs that they will be able to perform at the end of the programme. Pupils will develop their ability to follow simple chord notation (reading staff notation is developed in continuation courses) while also becoming more confident performers.

**FLEXIBLE
LEARNING**



WCET: Suggested programmed at Years 5 & 6

Instrument

Samba

A Latin American carnival staple, Samba is a fun and vibrant programme that develops key musical skills. With a clear leader, samba bands are always focused, dynamic groups that bring joy to any setting. The programme highlights strong rhythmic skills, developing solo opportunities and ensemble playing and leading – great for building your School Ensemble and for vibrant school performances.

Steel Pans

If you are looking for a challenge for your learners, then look no further than Steel Pans! These joyous instruments are deceptively challenging, but pupils always rise to the occasion. Exploring notation as well as percussion skills, this programme is a wonderful opportunity for your class to dive into instrumental learning and its cultural context.

Rock Band

Alongside singing, with our Rock Band programme you can choose two instruments from guitar or keyboard, drums or bass guitar for your children to learn. Exploring Rock and Pop repertoire, your pupils will love this programme which allows them to be part of the band!

Brass

The brass programme for years 5 and 6 will stretch the young learners while also developing brass technique. As more confident musicians, your pupils will enjoy using their musicianship skills as they learn about these versatile instruments, which play jazz, soul and orchestral music. Brass Sparks is a wonderful group run by Bristol Beacon for your learners to progress to.

Wind Band (Brass & Woodwind)

Wind Band is a programme that allows your students to learn both woodwind and brass instruments alongside each other. This programme is perfect for developing your School Orchestra. It also allows students the opportunity to progress comfortably into Bristol Beacon's other beginner ensembles such as our Sparks groups.

Woodwind

In addition to Wind Band, we also offer woodwind programmes. Focusing specifically on the technical aspects of playing a woodwind instrument (flute or clarinet), this rewarding programme supports learners to read music notation, play as an ensemble and have fun doing it.

Find out more about becoming a
Bristol Beacon Musical School:

Chloe Hann
Schools Relationship Manager

chloe.hann@bristolbeacon.org
0117 204 7140



Supported using public funding by



ARTS COUNCIL
ENGLAND



IMAGE CREDITS: SOUL MEDIA