



# Technical & Production Information

# Beacon Hall

Updated: April 2025

[www.bristolbeacon.org](http://www.bristolbeacon.org)

# Technical and Production Information

---

Event Coordinators  
[production@bristolbeacon.org](mailto:production@bristolbeacon.org)

Technical Queries  
[technical@bristolbeacon.org](mailto:technical@bristolbeacon.org)



*Photo Credit: Tim Crocker*

# Contents

---

1	Introduction.....	5
2	Risk Management.....	6
2.1	Construction Design Management (CDM) .....	6
3	Venue Access.....	7
3.1	Parking.....	7
3.1.1	Shore / Outside Broadcast Power .....	7
3.2	Get In Route.....	8
3.3	Equipment Lift.....	8
3.4	Backstage Lift .....	9
4	Venue Details.....	10
4.1	Auditorium Seating.....	10
4.2	Beacon Hall Stage Dimensions.....	11
4.2.1	Plan Dimensions.....	11
4.2.2	Section Dimensions.....	12
4.3	Mixer Position.....	13
4.4	Temporary Cable Routes.....	14
4.4.1	Mixer to Stage.....	14
4.4.2	To Outside Broadcast.....	14
4.5	Mojo Barrier.....	14
4.5.1	Barrier with Stage Extensions.....	14
4.5.2	Barrier Installation.....	14
5	Staging.....	15
5.1	Stage Surface.....	15
5.2	Stage Machinery .....	15
5.2.1	Orchestral Risers.....	15
5.2.2	Floor Loading.....	16
5.2.3	Forestage Elevators.....	16
5.3	Loose Risers.....	16
6	Rigging.....	17
5.4	Riggers .....	17
5.5	Loose Rigging Equipment .....	17
5.6	Overhead Rigging.....	18
5.7	Tabs & Drapes.....	19
6	Temporary Power Supplies.....	20
7	Sound.....	21
7.1	FOH PA System.....	21
7.1.1	Speech reinforcement & Delays.....	21

7.1.2	Main PA.....	21
7.1.3	Audio connection into PA.....	22
7.2	Monitors.....	23
7.3	Audio Consoles & Stage Racks.....	23
7.3.1	Mixing Consoles.....	23
7.3.2	Mix / Stage Racks.....	23
	Mix / Stage Racks .....	23
7.3.3	Monitor splits.....	23
7.4	Cabled Microphones.....	24
7.5	Radio Microphones.....	24
7.5.1	Radio microphones.....	24
7.5.2	OFCOM Frequencies.....	24
8	Lighting.....	25
8.1	Lighting Consoles.....	25
8.2	Data.....	25
8.3	Dimming/Relay Power .....	25
8.4	Orchestral Lighting.....	25
8.4.1	Overhead orchestral lighting.....	25
8.5	Lighting Fixtures.....	25
8.6	Lighting Plan .....	26
8.7	Followspots.....	27
8.8	Smoke and Fog Machines .....	27
9	Video and Projection.....	28
9.1	Projection.....	28
9.2	Cameras and Live Streaming.....	28
10	Pianos & Organ.....	29
11	Communications.....	29
12	Backstage.....	30
12.1	Dressing rooms.....	30
12.2	Production Offices.....	30
12.3	Additional Dressing Rooms.....	31
12.4	Touring Catering Kitchen.....	31
12.5	Towels.....	31
12.6	Laundry Facilities.....	31
12.7	Internet.....	31

# 1 Introduction

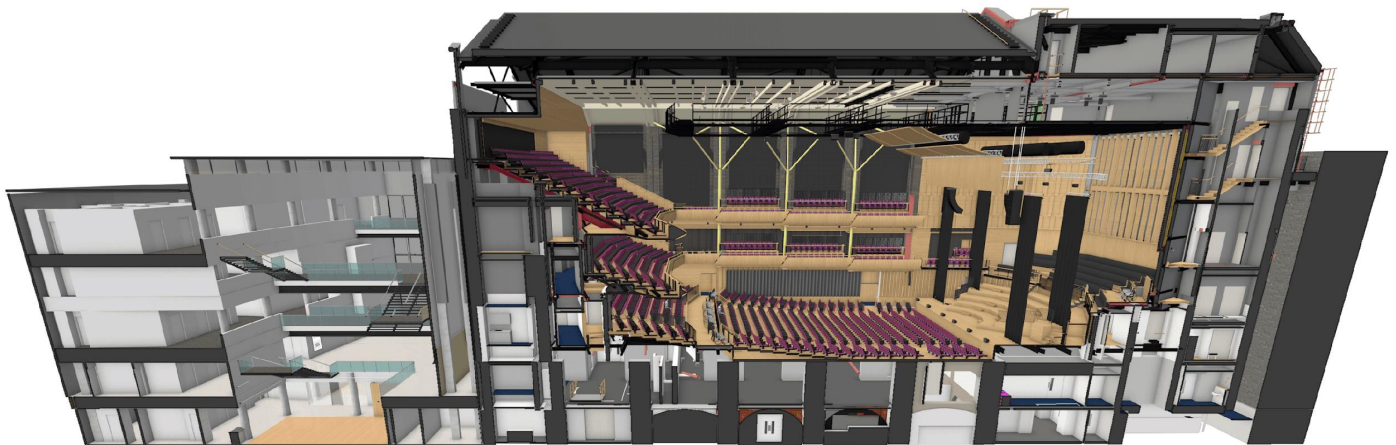
---

Run by Bristol Music Trust, and known as Bristol Beacon we were established in 2011 to run the South West's largest concert and music hall and promote musical excellence, creative learning and engagement. We announced our new name in September 2020. Bristol Beacon is a symbol of hope and community. A focal point for music and a place of welcome, warmth and light.

Our vision is to unite people through the joy of live music. We achieve this through a diverse programme of inspirational musical experiences, which offers something for everybody and encompasses music of all genres including classical, jazz, folk, world, rock, and pop, as well as local choirs, orchestras, and schools. As an organisation increasing in national importance, we have developed our creative learning and engagement work on an unparalleled scale. Our specialisms include working with underrepresented communities, including 2,500 young people with disabilities and in care. As the Music-Education-Hub for Bristol, we deliver the National-Plan-for-Music-Education to all children aged 4-18, inspiring 39,000 children in 150 schools, special schools, and youth groups every year. Our community led programme, in partnership with The National Foundation for Youth Music and Paul Hamlyn Foundation, works with children under five from low-income families, adults in social isolation/ with dementia, children in care/care leavers and community musicians.

In 2023 we opened our newly refurbished concert halls in central Bristol with a new Music Education Centre in the cellars. This is a completely new space dedicated to music teaching and incorporating a new performance space aimed at young people and emerging artists.

This document gives an overview of the technical facilities in our largest venue, **Beacon Hall**.



*1-1 Beacon Hall & Foyer Cut Through*

## 2 Risk Management

---

Bristol Beacon is committed to ensuring the health and safety of everyone involved in our activities. We prioritise safety throughout construction, event production, and maintenance phases. Our goal is to create a secure environment for staff, contractors, performers, and audiences.

### 2.1 Construction Design Management (CDM)

At Bristol Beacon, safety is paramount in all we do. Our CDM (Construction, Design, and Management) policy has been designed to ensure the well-being of all involved.

During the **Pre-Construction Phase**, we lay the foundation for safety by identifying who assumes the roles of Client, Principle Design & Principle Contractor, conducting risk assessments, and integrating health and safety into project plans and designs.

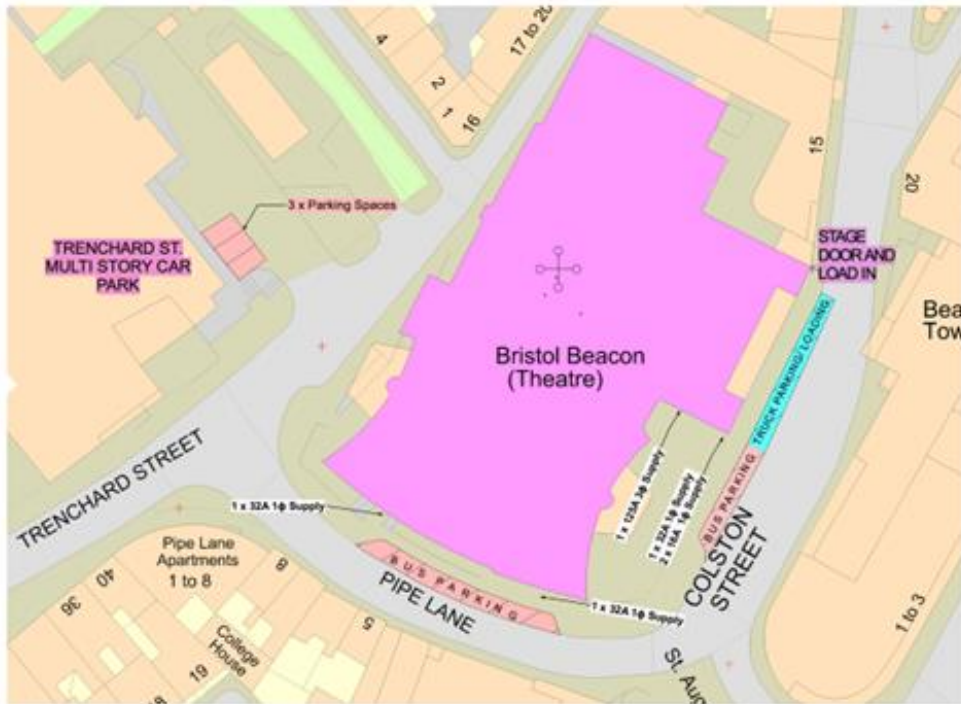
The **Construction Phase** encompasses the various activities that happen during the get-in and get-out. We adhere to stringent safety protocols for working at height, equipment handling, signage, and regular inspections. Upon arrival you will receive a health & safety briefing explaining how we categorise activities based on their risk levels, tailoring safety measures accordingly. You will see signage and receive instructions from our Duty Technician. Please respect their instructions.

### Risk Assessments and Method Statements

We expect clients and contractors working within our premises to have fully risk assessed their activities and have method statements in place. These will be requested in advance by our production team. Copies of our risk assessment are available upon request.

# 3 Venue Access

## 3.1 Parking



3-1 Site Overview

### 3.1.1 Shore / Outside Broadcast Power

Street level power is available for busses and outside broadcast vehicles.

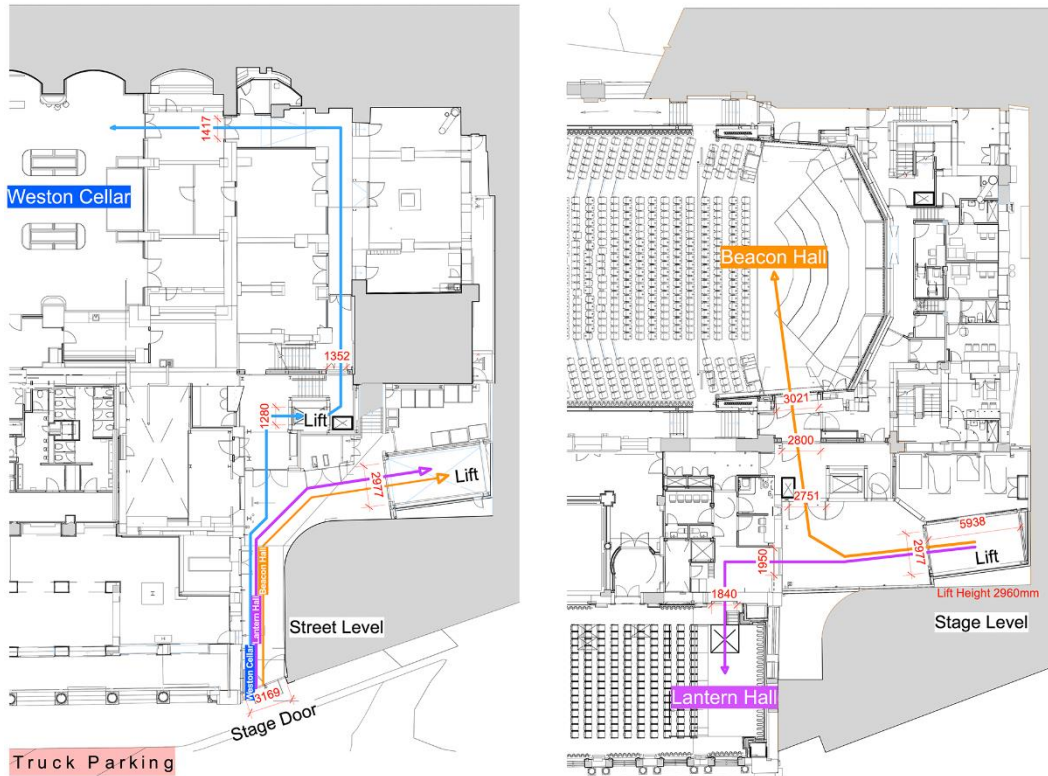
Shore Power				
	Supplies	RCD Details	What3words Location	Cable distance to road (approx.)
Colston Street (Single Phase Bollard)	1x 32A/1 Ceeform 2x 16A/1 Ceeform	30mA	//brush.figure.pretty	5m
Colston Street (Three Phase Bollard)	1x 125A/3 Ceeform 2x Ethernet Lines	Variable 30mA - 3A No Trip Option	//solve.about.giving	10m
Pipe Lane (West End)	1x 32A/1 Ceeform	30mA	//boost.handles.wipes	10m
Pipe Lane (East End)	1x 32A/1 Ceeform	30mA	//ocean.august.blast	10m

### 3.2 Get In Route

The Get In route is via our Artist Entrance yard on Colston Street. What3words location //deep.leans.light.

As vehicles are unloaded into the loading bay on a live road, it is strongly recommended that all personnel involved in the loading process wear high-visibility clothing. Additional temporary barriers and traffic cones should be placed around the loading area.

Please also be considerate of pedestrians on the pavement and give them right of way.



3-2 Get In Route

### 3.3 Equipment Lift

A large goods lift is available to carry equipment from the get in yard on Colston Street to the scene dock which is adjacent the Beacon Hall stage. This goods lift and scene dock access is shared with our second performance space, Lantern Hall. Under no circumstances are people permitted to travel in the goods lift.

Equipment Lift Details				
	Height	Width	Depth	Weight Capacity
Internal Lift Dimensions	2960mm	2977mm	5938m m	6000kg
Door Dimensions	2960mm	2977mm	-	-



### 3.4 Backstage Lift

A smaller lift is available for moving people and equipment between Artist Entrance, Green Room, Stage, and the choir levels.

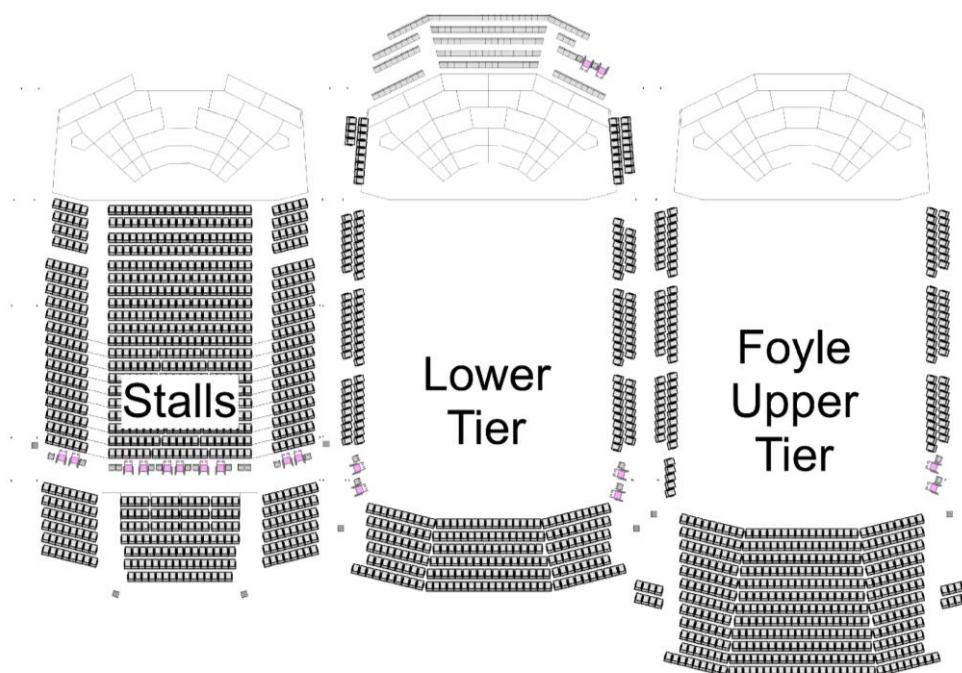
Backstage Lift Details				
	Height	Width	Depth	Weight Capacity
Internal Lift Dimensions	2100mm	1100mm	1900m m	1000kg
Door Dimensions	2100mm	995mm	-	-

Please do not obstruct the doors to any lift. Should there be a need to hold open any automatic lift door, please speak to a member of staff to see if this can be actioned. Obstructing a door can lead to the lift malfunctioning which will cause delays for your show and others.

## 4 Venue Details

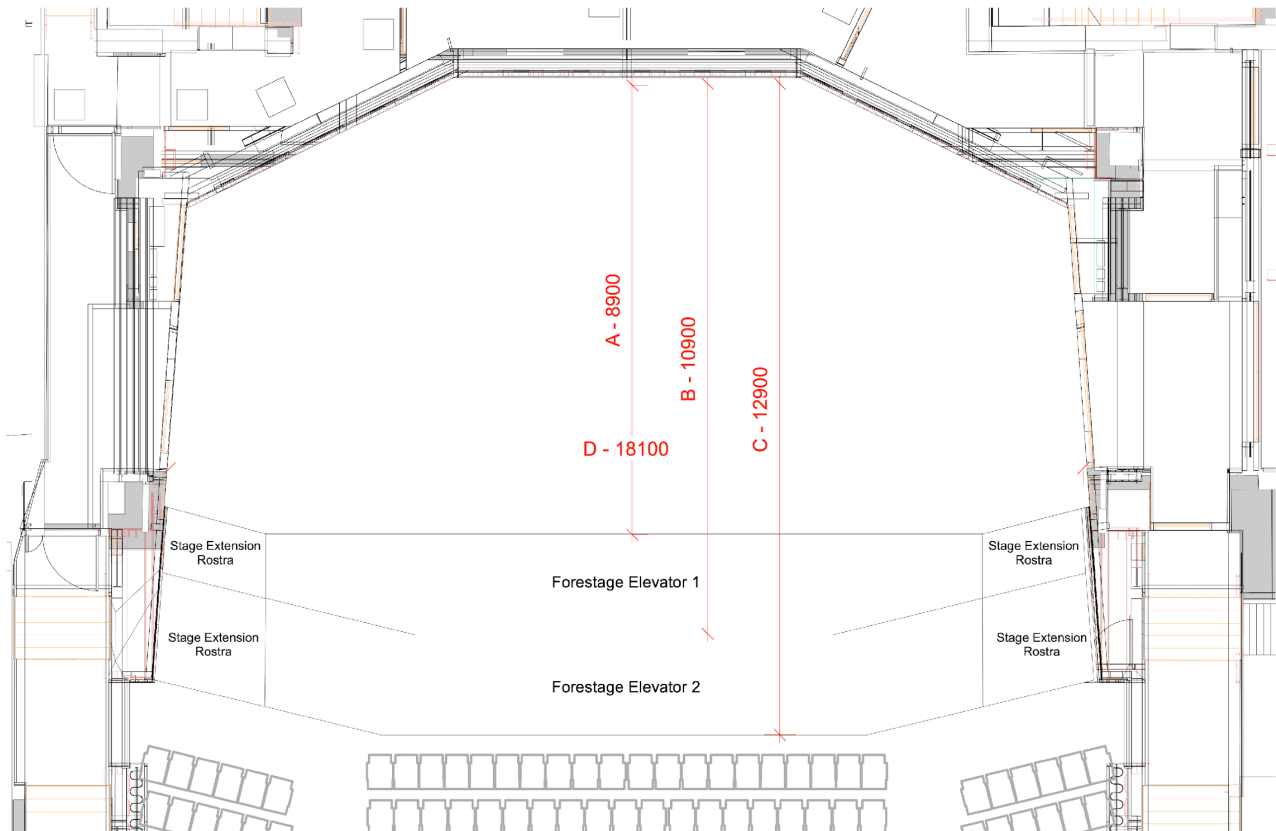
### 4.1 Auditorium Seating

There are three levels of seating in Beacon Hall. The capacity of a specific event can be confirmed by your event coordinator.



4.1.1 Beacon Hall Wheelchair User Positions

## 4.2 Beacon Hall Stage Dimensions

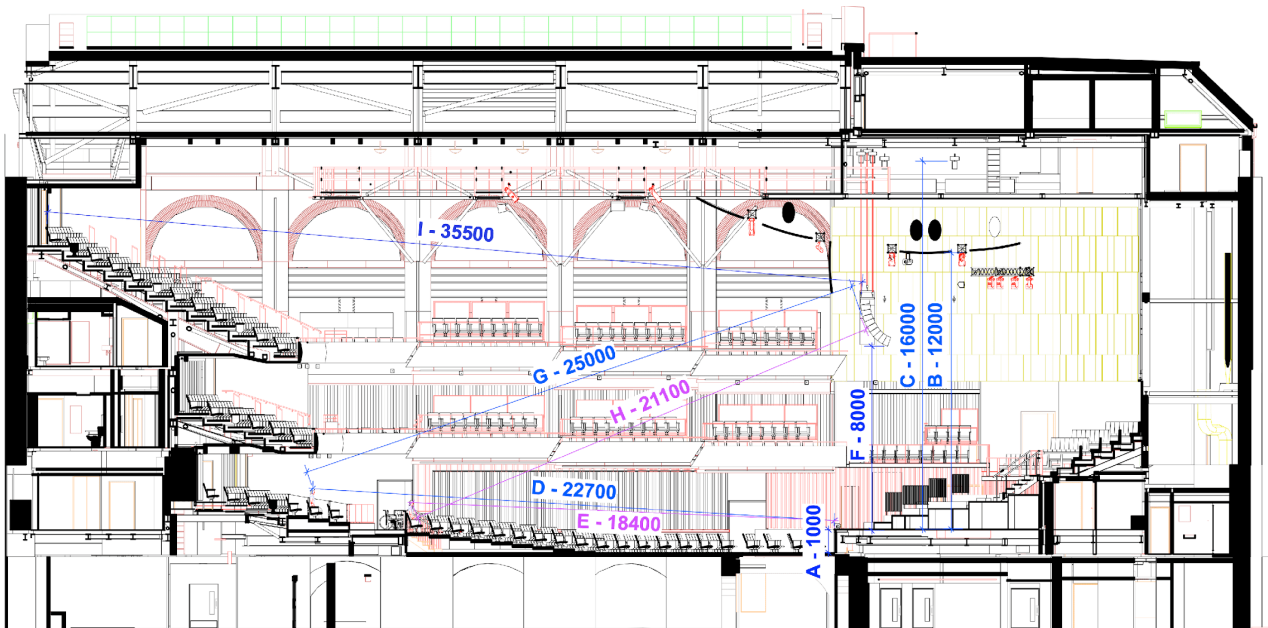


4-2 Beacon Hall Stage Dimensions

### 4.2.1 Plan Dimensions

Plan Dimensions			
Dimension	Detail	Distance	Note
A	Depth of standard stage at centre line	8.9m	
B	Depth of stage with single extension	10.9m	-
C	Depth of stage with double extension	12.9m	Not available with pit barrier
D	Width of stage	18.1m	

## 4.2.2 Section Dimensions

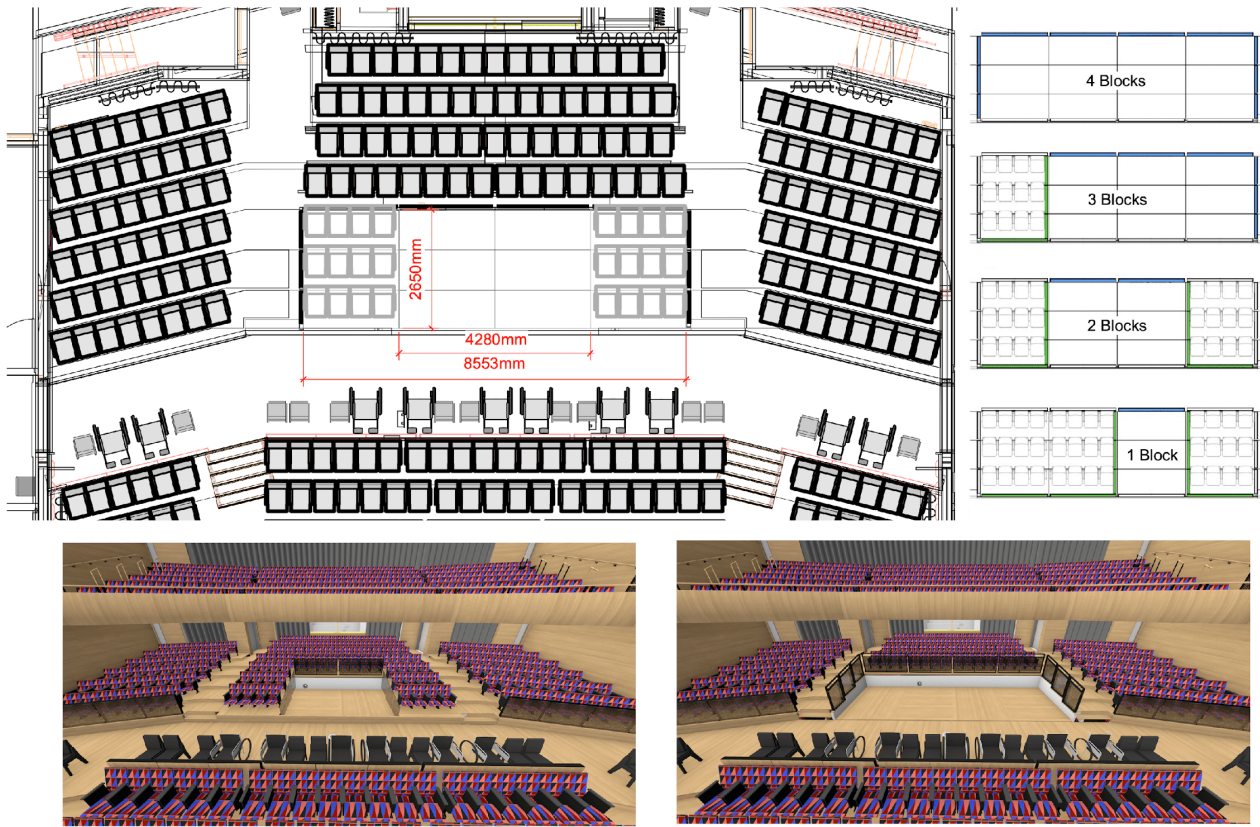


### Section Dimensions

Dimension	Detail	Distance	Note
A	Stage Height from Auditorium Floor	1m	
B	Height to Canopy	12m	
C	Height to Rigging Points	16m	
D	Distance to FOH Mixer (rear stalls position)	22.7m	
E	Distance to FOH Mixer (mid stalls position)	18.4m	
F	Stage level to main array	8m	
G	Distance from main array to FOH Mixer (rear stalls position)	25m	
H	Distance from main array to FOH Mixer (mid stalls position)	21.1m	
I	Distance from main array to furthest seat	35.5m	

### 4.3 Mixer Position

The default mixer position is near the cross aisle in rear stalls. It is centred to the stage and not against a wall or under the balcony.



4-3 Beacon Hall Mix Positions

Mixer Position Dimensions			
Description	Width	Depth	Note
Block 2 & 3	4.2m (14')	2.6m	Default
Block 2, 3 & 4	6.4m (21')	2.6m	Recommended if using multiple consoles (e.g. for support acts)
Block 1 - 4	8.6m (28')	2.6m	Recommended if using a large amount of control equipment

Alternative mixer positions are available depending on the complexity of the event, the seating format and the audience capacity. Please discuss this with you event coordinator.

## 4.4 Temporary Cable Routes

### 4.4.1 Mixer to Stage

Temporary cable routes from the control positions to stage are available through traps in the floor or around the balcony edge. Cables can be run to both sides of the stage.

Temporary Cable Routes			
Dimension	Detail	Distance	Note
-	Multi-run to Mid Stalls Control Position	<50m	
-	Multi-run to Crossover Control Position	<50m	

### 4.4.2 To Outside Broadcast

Additional temporary cable routes are available to run to adjacent rooms and to outside broadcast. Please enquire for further information.

## 4.5 Mojo Barrier

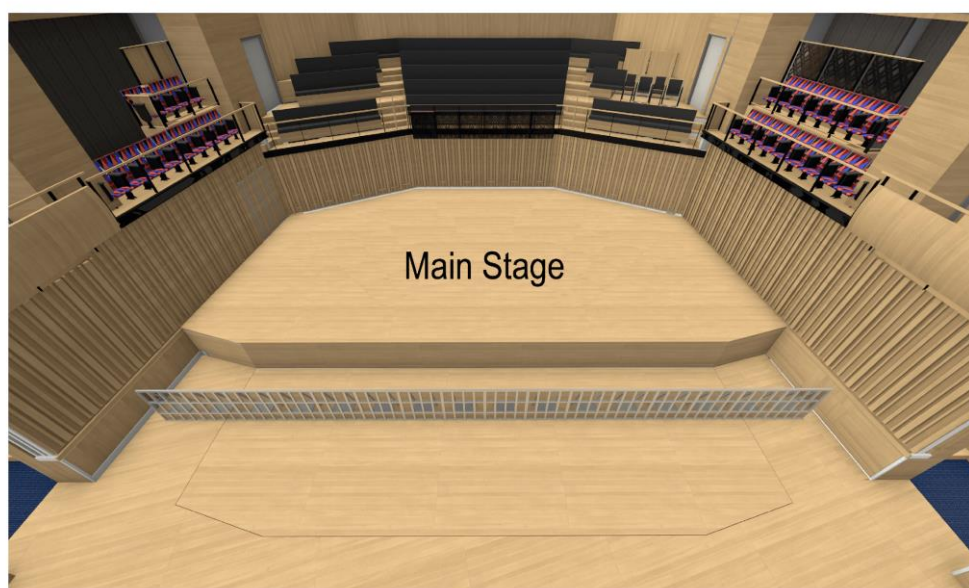
It is a condition of our venue risk assessment that a front of stage 'pit' barrier is installed for standing shows in Beacon Hall. Any request to not have a barrier will be at our discretion following a thorough risk assessment.

### 4.5.1 Barrier with Stage Extensions

A barrier can be installed in front of a standard depth stage or 2m stage extension, **but not a 4m extension** as the footprint of the barrier would impede the front stalls fire escapes.

### 4.5.2 Barrier Installation

The installation and removal of the barrier must be undertaken by our third party contractor. If any specific requirements are needed, please speak with your event coordinator.



4.4 Mojo Barrier

# 5 Staging

## 5.1 Stage Surface

The stage surface is polished wood. Drilling, screwing or nailing items through the stage surface is not permitted. Any spiked instrument feet must have soft protection on them to avoid denting the floor.

A black dance floor is available on request for events that need a dark surface. Please contact your event coordinator for installation costs.

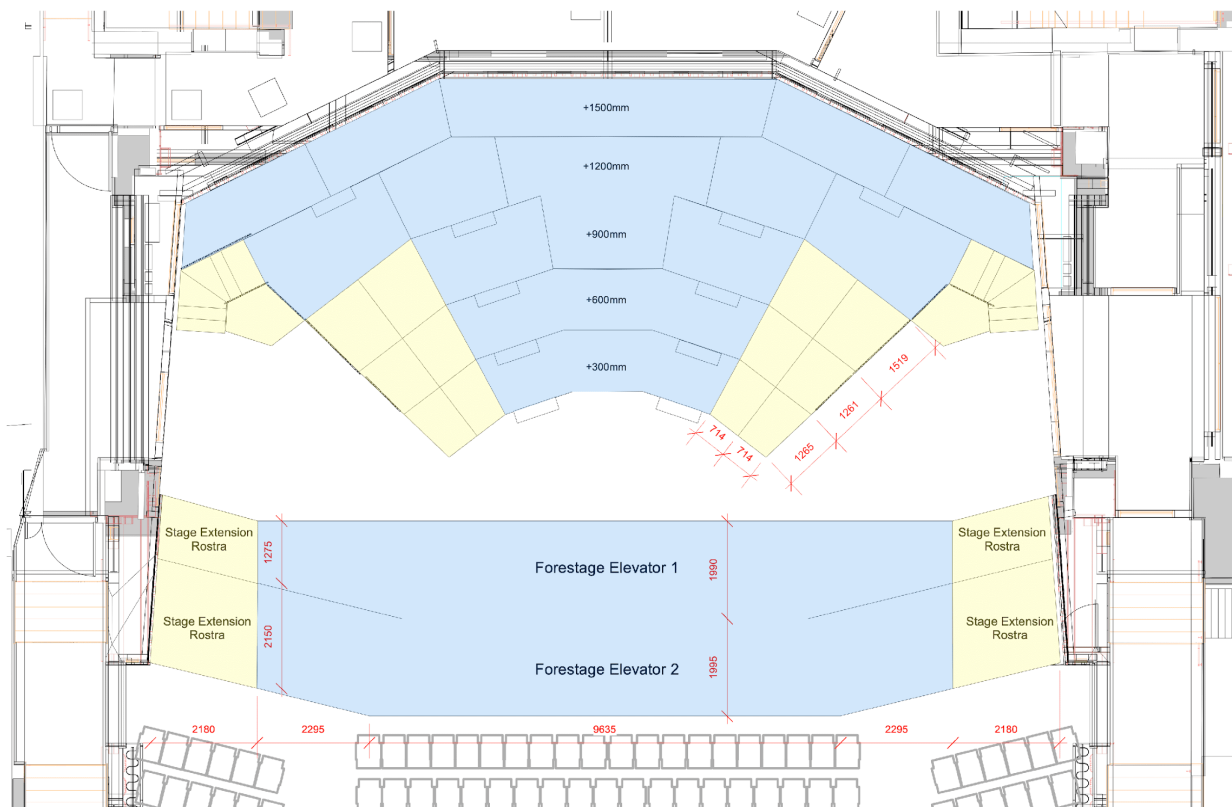
## 5.2 Stage Machinery

### 5.2.1 Orchestral Risers

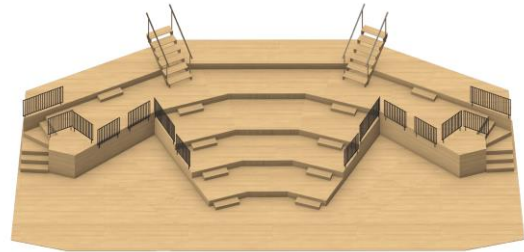
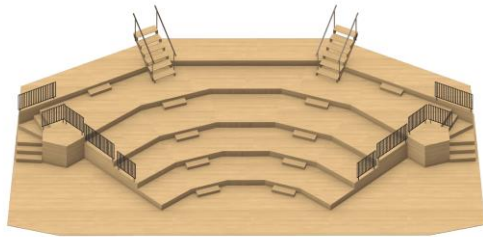
The orchestral risers consist of a series of scissor lift platforms (SP - Blue) and manual lift rostra (R - Yellow). The standard setup is detailed below and can be setup with or without the manual lift rostra pieces.

Customised heights are possible as each scissor lift platform has a variable height of between 0-1500mm, but please note that the manual-lift rostra, the steps and the side fascia panels are fixed height and therefore may not fit in an alternative configuration. Please speak to your event coordinator if you think you may require something different to the standard setup shown in the drawing below. Further measurements of the stage layout can be found at the end of this document.

Please note that staging rostra's can not be moved, manually or mechanically once your equipment is in place, so please ensure that your stage layout is correct before beginning your build.



52- Stage Machinery

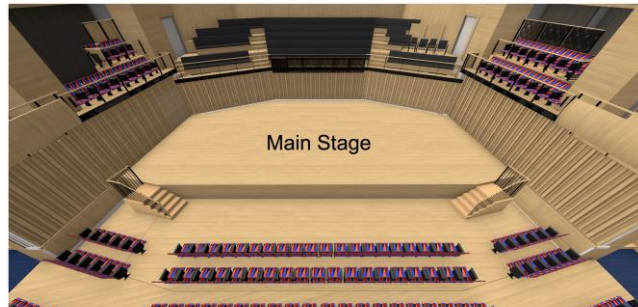
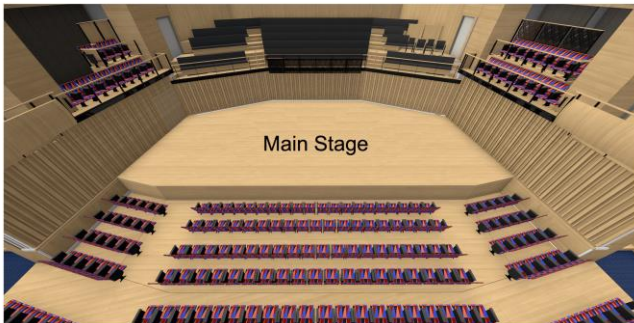


### 5.2.2 Floor Loading

Static Load 7.5kN/m<sup>2</sup>

Point Load 3kN (over a square area of 300mm x 300mm)

### 5.2.3 Forestage Elevators



### 5.3 Loose Risers

Additional loose decks are available. They have black tops and can be supplied with either 300mm, 600mm or 1m long legs. Wheels for rolling risers are also available upon request. Loose decking is shared with all spaces so please confirm your staging requirements with your event coordinator. Additional costs may be associated with hiring these stage items.

Loose Stage Decks			
Quantity	Make Model	Width	Depth
12	Prolyte Litedeck	2.4m	1.2m
10	Prolyte Stagedex	2m	1m



## 6 Rigging

Beams and strong points are available in the roof of Beacon Hall providing flexibility for rigging productions of most sizes. Rigging is possible with either soft strops or beam clamps.

In-house lighting remains permanently hung on house trusses. These fixtures cannot be removed for touring equipment.

### 5.4 Riggers

Two riggers are required to safely rig equipment in Beacon Hall – an up rigger and a down rigger. It is our policy that, if required, the up-rigger must be supplied by Bristol Beacon. This person will be extensively familiar with the rigging deck and has a good understanding of the load bearing capacity of the beams. Touring riggers and staff can access the rigging deck under supervision and by following the house rules issued by the venue team.

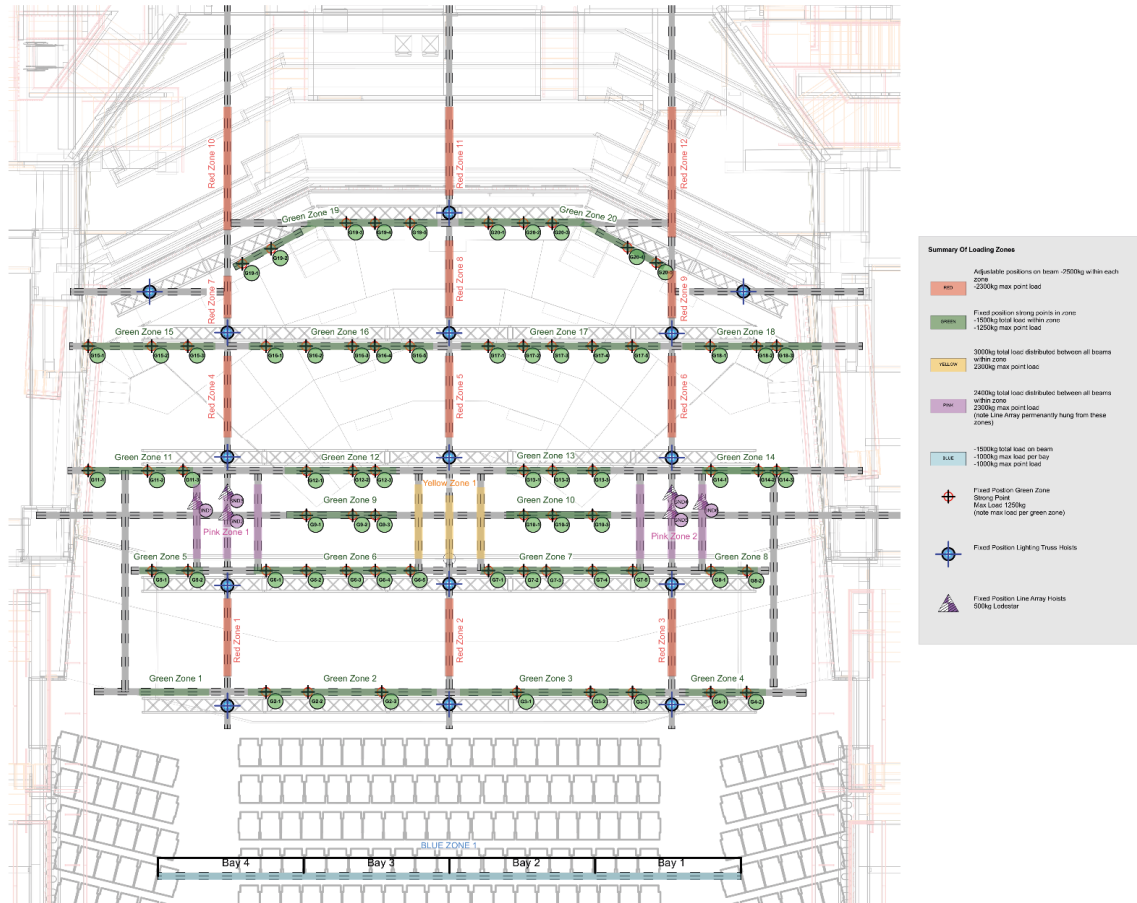
### 5.5 Loose Rigging Equipment

The following loose motors and trusses can be provided for touring equipment if required.

Loose Rigging Equipment			
Quantity	Equipment	SWL	Note
6	CM-Lodestar Model L D8+ Chain Hoist	1000kg	
8	CM-Lodestar Model F D8+ Chain Hoist	500kg	
2	Sixty82 M29L 4m Ladder truss (black)	-	Used predominantly for drapes and soft goods
12	Sixty82 M29L 3m Ladder truss (black)	-	
4	Sixty82 M29L 2m Ladder truss (black)	-	
4	Sixty82 M29L 1m Ladder truss (black)	-	
Assorted	Rigging Accessories (Strops, shackles, O rings etc)	-	Please enquire for availability

## 5.6 Overhead Rigging

### Grid Loadings -Rigging Permitted In Marked Zones Only-



6-1 Over Stage Rigging Plan

Rigging Beams			
Colour	Max area load	Max point load	Notes
Red	2,500Kg	2,300Kg	Adjustable positions
Yellow	3,000Kg	2,300Kg	Left and Right areas have in house PA already hung
Green	1,500Kg	1,250Kg	Fixed positions
Blue	1,000Kg	1,000Kg	1,500Kg total load

All rigging to house points must be plumb. Bridling between points is not possible due to the position of slots and holes in the rigging deck floor.

For detailed rigging CAD files, please speak with your event coordinator.

## 5.7 Tabs & Drapes

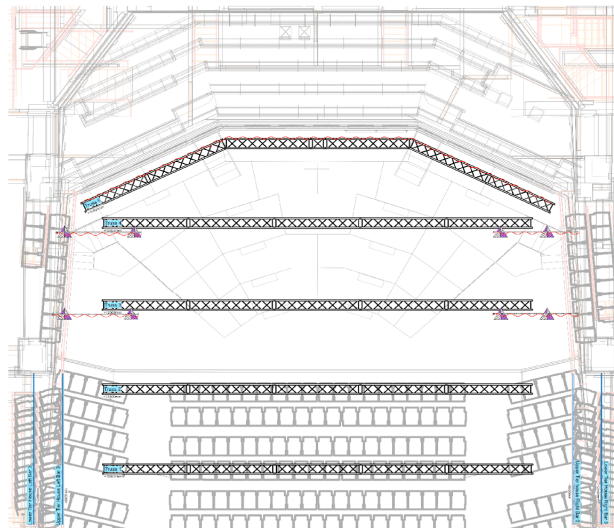
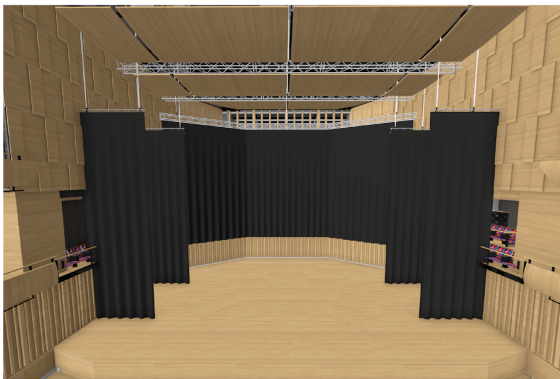
Black wool surge drapes can be used to 'black box' the stage space and also create wings.

A full rear black drape can be positioned to cover over the back wall and choir seating.

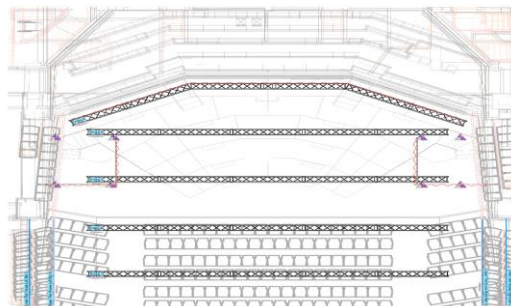
Side tabs can be installed to create wings. Please speak with your event coordinator to discuss your requirements.

### Loose Drapes

Quantity	Description	Width	Drop
8	Black Wool Surge (Ties at Top)	3m	10m
2	Black Wool Surge (Ties at Top)	6.25m	10m



### 6.2 House Legs example



## 6 Temporary Power Supplies

Power supplies for touring equipment are available throughout the stage area. Supplies are split by department and Audio Visual supplies have a separate earthing arrangement (i.e. clean earth).

All supplies have RCD bypass available. This should only be used with RCD protected power distribution equipment.

Stage Right Power Supplies			
Intended Department	Supply Feed	Quantity	Sockets
Lighting	250A Three Phase	1	200A Powerlock
		1	125A/3 Ceeform
		1	63A/3 Ceeform
		1	32A/3 Ceeform
Audio Visual	200A Three Phase	1	125A/3 Ceeform
		1	63A/3 Ceeform
		3	32A/1 Ceeform

Stage Left Power Supplies			
Intended Department	Supply Feed	Quantity	Sockets
Audio Visual	125A Three Phase	1	125A/3 Ceeform
		2	63A/3 Ceeform
		1	32A/3 Ceeform
		3	32A/1 Ceeform

Rigging Deck Power Supplies			
Intended Department	Supply Feed	Quantity	Sockets
Stage Engineering	125A Three Phase	1	125A/3 Ceeform

# 7 Sound

## 7.1 FOH PA System

### 7.1.1 Speech reinforcement & Delays

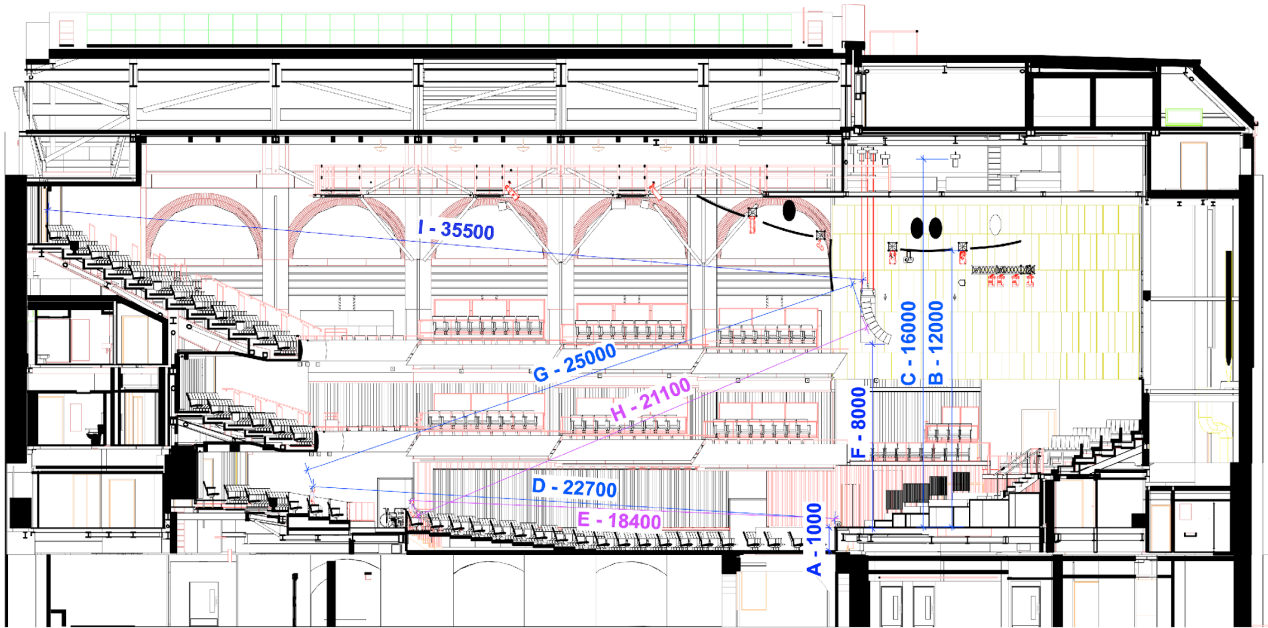
The Speech reinforcement & Delays PA system is designed to work standalone for events where it would not be appropriate to have a full line array system on show. This system will give a balanced coverage of >96dB (A) SPL across the entire auditorium.

An L-Acoustics Soundvision file of the system is available upon request.

Speech Reinforcement & Delays System			
Area	Quantity	Description	Notes
Front Stalls	2	L-Acoustics Syva	
Rear Stalls	6	L-Acoustics 5XT	
Side Lower Tier	14	L-Acoustics 5XT	
Rear Lower Tier	6	L-Acoustics 5XT	
Side Upper Tier	2	L-Acoustics X8	
Front Upper Tier	3	L-Acoustics A10i WIDE	
Rear Upper Tier	2	L-Acoustics A10i WIDE	
Stage Side Seats	4	L-Acoustics 5XT	
Choir Seats	4	L-Acoustics X8	Requires rigging from Truss 4

### 7.1.2 Main PA

The Main PA system works with the speech reinforcement & delays system to give a balanced coverage of >110 dB (A) SPL across the auditorium. The flown arrays are on chain hoists and can be retracted and hidden above the acoustics canopy when not required. The front fills can also be removed as required.



### Main PA System

Area	Quantity	Description	Notes
Flown Arrays	20	L-Acoustics KARA II	
	8	L-Acoustics KS21	
Floor Subs	4	L-Acoustics KS21	Available upon request
Down Fills	4	L-Acoustics ARCS Wide	Available upon request
Front Fills	6	L-Acoustics X8	

#### 7.1.3 Audio connection into PA

Connection to the PA is either via analogue XLR, AVB, AES/EBU or Dante patch.

## 7.2 Monitors

Stage Monitors		
Quantity	Description	Notes
12	L-Acoustics X12	12 channels of amplification
4	L-Acoustics ARCS Wide	Side Fills (if required and not already being used as down fills)
2	L-Acoustics SB18	Additional subs (if required)

## 7.3 Audio Consoles & Stage Racks

Bristol Beacon uses Allen & Heath consoles throughout the complex. To aid with changing between different PA formats, control surfaces and mixing positions we have opted for a centralised DMO architecture. The console surfaces connect to the DMO over GigaACE and there is GX, DX and Dante IO within the DMO for connecting to stage boxes and PA system.

### 7.3.1 Mixing Consoles

Mixing Consoles		
Quantity	Description	Notes
1	Allen & Heath dLive S7000	Includes Waves Card
1	Allen & Heath dLive C3500	
1	Allen & Heath SQ5	

### 7.3.2 Mix / Stage Racks

Mix / Stage Racks				
	Quantity	Description	I / O	Notes
FOH Mix Rack	1	Allen & Heath GX4816	48 In, 16 out	Routed via central Allen & Heath DMO
	2	Allen & Heath DT32	24 in, 8 out	
Monitor Mix Rack	1	Allen & Heath CDM 48	48 in, 24 out	
Dante Patch	2	Allen & Heath DT168	16 in, 8 out	Patched via rack rooms from facilities panels.

### 7.3.3 Monitor splits

Up to 64 ways of analogue splits are available upon request.

## 7.4 Cabled Microphones

A large selection of microphones are available and shared across all spaces at Bristol Beacon. We stock microphones from brands such as Shure, Sennheiser, Audix, AKG, Beyerdynamic, DPA and Electro-Voice.

Please advise us of your microphone requirements in advance.

## 7.5 Radio Microphones

### 7.5.1 Radio microphones

Radio Microphones		
Quantity	Description	Colour
8	Shure AD2 Beta 58A (Handheld)	Black
8	Shure AD 1 (Belt Pack)	Black
8	DPA 4088 (Headset)	6x Pink, 2x Black
8	DPA 4060 (Lapel)	Black

### 7.5.2 OFCOM Frequencies

We use radio microphones and have licensed frequencies in Channel 40 (622-630MHz) so please do not tune your touring equipment to those frequencies.

We have licensed PMSE Channel 38 (606-614MHz) which you're welcome to use. For any other frequencies you would need to source your own licenses.

Bristol Beacon Frequencies (UK OFCOM Channel 38: 622-630Mhz)			
Mic Channel	Receiver	Receiver Channel	Frequency (MHz)
1	Shure AD4Q (A)	1	624.150
2		2	625.325
3		3	626.400
4		4	626.800
5	Shure AD4Q (B)	1	627.575
6		2	628.500
7		3	629.200
8		4	629.600
9	Sennheiser EW 500 G4 (A)	1	622.275
10	Sennheiser EW 500 G4 (B)	1	622.800



# 8 Lighting

## 8.1 Lighting Consoles

Lighting Control Consoles		
Quantity	Description	Notes
1	Chamsys Magic Q 500M with Stadium Wing	
1	Chamsys Magic MQ70	In control room

## 8.2 Data

The venue's lighting infrastructure consists of CAT6 cabling and networking control equipment supporting the sACN protocol. sACN to 5pin DMX nodes are installed in the rack rooms (for patching throughout the venue) and on the overhead lighting trusses. 5pin DMX outlets are available in all areas within the venue.

## 8.3 Dimming/Relay Power

ETC Sensor3 racks with ThruPower modules will allow dimmer, relay or constant power to 152x 10a circuits. Each circuit terminates as either a 6-channel Socapex or as a 16a ceeform connector.

## 8.4 Orchestral Lighting

### 8.4.1 Overhead orchestral lighting

Over the stage is an acoustic canopy. Mounted within this will be ETC ArcSystem fixtures providing the orchestral platform lighting. These fixtures will an average >800lux on the orchestral area.

## 8.5 Lighting Fixtures

A comprehensive, professional package of automated LED lighting is available,

The overhead lighting system within the Beacon Hall has been carefully designed to serve as a high-quality lighting installation, suitable as the overhead rig for most touring shows. The fixtures cannot be de-rigged from the trusses, but the trusses can be flown up and out of sight above the acoustic canopy sections if not required.

There is also a small allowance of fixtures to be used as a floor package.

Lighting Fixtures		
Position	Quantity	Fixture
FOH Bridge 1	4	ETC Source Four LED Series 2 Lustr (10deg)
FOH Bridge 2	6	ETC Source Four LED Series 2 Lustr (15/30 Zoom)
FOH Bridge 3	3	Robert Juliat Authur Followspots
Upper Tier House Left	2	ETC Source Four LED Series 2 (15/30 Zoom)
Upper Tier House Right	2	ETC Source Four LED Series 2 (15/30 Zoom)
Truss 1	10	Ayrton Eurus TC
Truss 2	4	Chauvet Strike Array 4
Truss 3	8	Robe Spider
	4	Ayrton Diablo S
	4	Chauvet Strike Array 2
Truss 4	8	Robe Spider
	6	Ayrton Diablo S
	4	GLP JDC1
Truss 5	8	Robe Spider
	6	Ayrton Diablo S
Additional Fixtures	4	Robe Spider
	4	Martin Mac Quantum Profile
	16	Chauvet Colorado Batten Q15

## 8.6 Lighting Plan

Please speak to your event coordinator to ensure this is up to date and discuss any requirements.



## **8.7 Followspots**

Three Robert Juliat Authur Followspots are located on the FOH Bridge 3. There is no charge to use the followspots, but access to the bridges is via the rigging loft and therefore all followspots will require a thorough safety briefing from our Duty Technician.

Bristol Beacon can supply followspot operators for a charge.

## **8.8 Smoke and Fog Machines**

2x Smoke Factory Tour Hazers

1x Look Viper 2.6 Smoke Machine

2x Antari AF3 fan

## 9 Video and Projection

HD-SDI, Cat 6 and fibreoptic runs are spread throughout the venue for the interconnection of cameras and video equipment. A robust NDI network is also installed within the audio visual network for the distribution of video over IP.

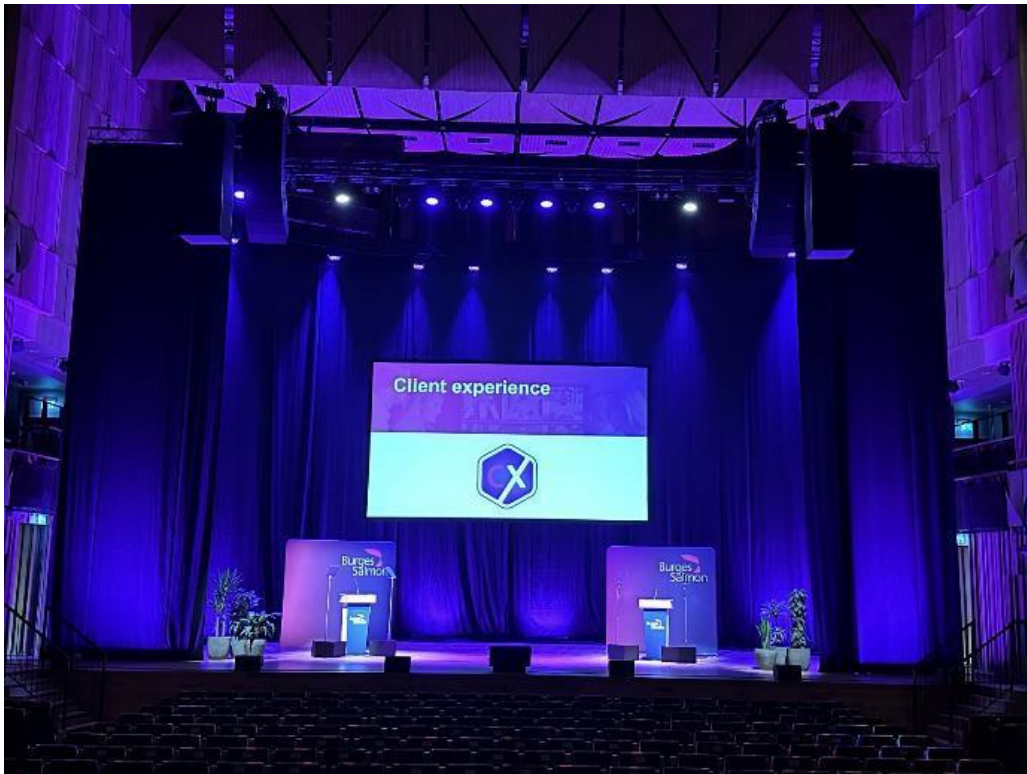
Audio visual equipment is shared between all spaces at Bristol Beacon please enquire for availability.

### 9.1 Projection

A 10,000 Lumen projector is permanently mounted onto the front of the lower tier. This is aligned to a projection screen which, when required, is suspended from Truss 4.

1x Christie Digital DWU-1100-GS (10k HD Video Projector)

1x 6.5m (w) 16:9 projection screen



### 9.2 Cameras and Live Streaming

A basic selection of remotely controlled cameras and vision mixing equipment is available upon request. Please enquire to ensure the correct equipment is available.

Equipment includes:

Bird Dog PTZ Cameras

Digital SLRs

ATEM Vision Mixers

vMix Vision Mixer

## 10 Pianos & Organ

---

Pianos			
Manufacturer	Model	Year Manufactured	Notes
Steinway	D	2022	Only to be used for concerto performances
Steinway	D	1987	
Yamaha	C3	2008	

Our Harrison and Harrison Organ is currently being reinstated and voiced. We expect it to be ready for performances in Autumn/Winter 2025.

Please enquire for charges related to using a piano or the organ for your event.

## 11 Communications

---

A mixture of Green GO digital and Tecpro analogue comms (with interfaces between) is available. Touring 2-wire systems can also be interfaced into our system for connection to followspot positions and to wireless comms.

6x Tecpro BP253 belt packs

4x Green Go Wireless comms

Mixture of single or dual muff headsets

## 12 Backstage

### 12.1 Dressing rooms

All dressing rooms have a sofa, hanging rail, a full-length mirror, vanity mirrors with lights and wifi.

Dressing Rooms			
Room	Capacity	Facilities	Access
Dressing Room 1	4	Ensuite with WC & Shower Upright practice piano	Stepped Access
Dressing Room 2	4		Stepped Access
Dressing Room 3	6		Stepped Access
Dressing Room 4	10	Ensuite with WC & Shower	Stepped Access
Dressing Room 5	2	Accessible WC & Shower	Stage level wheelchair access
Dressing Room 6	15	Group dressing room with WC & shower cubicles	Wheelchair access via lift
Dressing Room 7	10	Group dressing room with WC & shower cubicles	Wheelchair access via lift
Green Room	60	Accessible WC Upright practice piano	Wheelchair access via lift

There is a large green room on the lower floor with 2 chorus dressing rooms (Rooms 6 & 7) adjacent with toilets and showers. It is accessible from Stage door and stage level by lift or stairs.

It is recommended that Dressing Room 6 and Dressing Room 7 are used for single sex changing areas.

### 12.2 Production Offices

Production Offices		
Room	Capacity	Facilities
Production Office 1	1	Desk, 1x chair
Production Office 2	2	Desk, 2x chairs

### 12.3 Additional Dressing Rooms

There are 2 additional accessible dressing rooms designed to serve The Lantern Hall but these can be used for Beacon Hall if available. Please enquire with your event coordinator should you wish to use these spaces.

Lantern Hall Dressing Rooms			
Room	Capacity	Facilities	Access
Dressing Room 8	3	Adjacent to WC & Shower	Stage level wheelchair access
Dressing Room 9	5	WC	Stage level wheelchair access

### 12.4 Touring Catering Kitchen

A touring kitchen is available for use by touring caterers. Equipment includes:

- Hot/Cold Water
- 1x Tall Fridge
- 1x Dishwasher
- 3x 32a three phase power
- Numerous 13amp supplies

Please let your event coordinator know in advance if you will be bringing touring / external caterers.

### 12.5 Towels

Large towels and stage towels available with advance notice.

### 12.6 Laundry Facilities

Bristol Beacon does not have laundry facilities. Please enquire with your event coordinator for the nearest commercially available laundrette.

### 12.7 Internet

Bristol Beacon can offer High Speed Internet Access (HSIA) across the venue. This can be delivered over WiFi or wired connections. Please speak with your event coordinator should you have specific internet access, or network requirements.