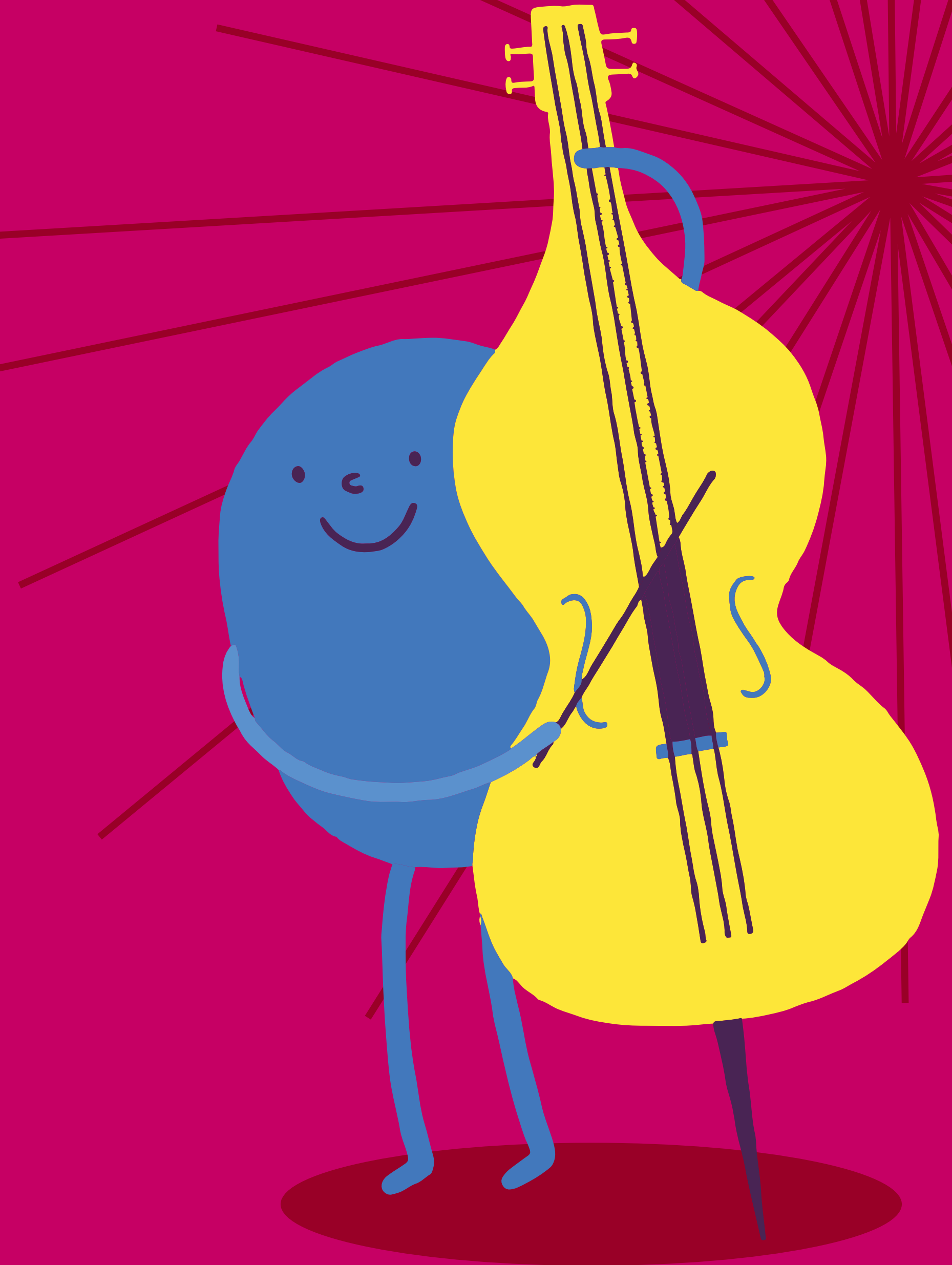


**BRISTOL  
BEACON**

Build a creative community  
and become a

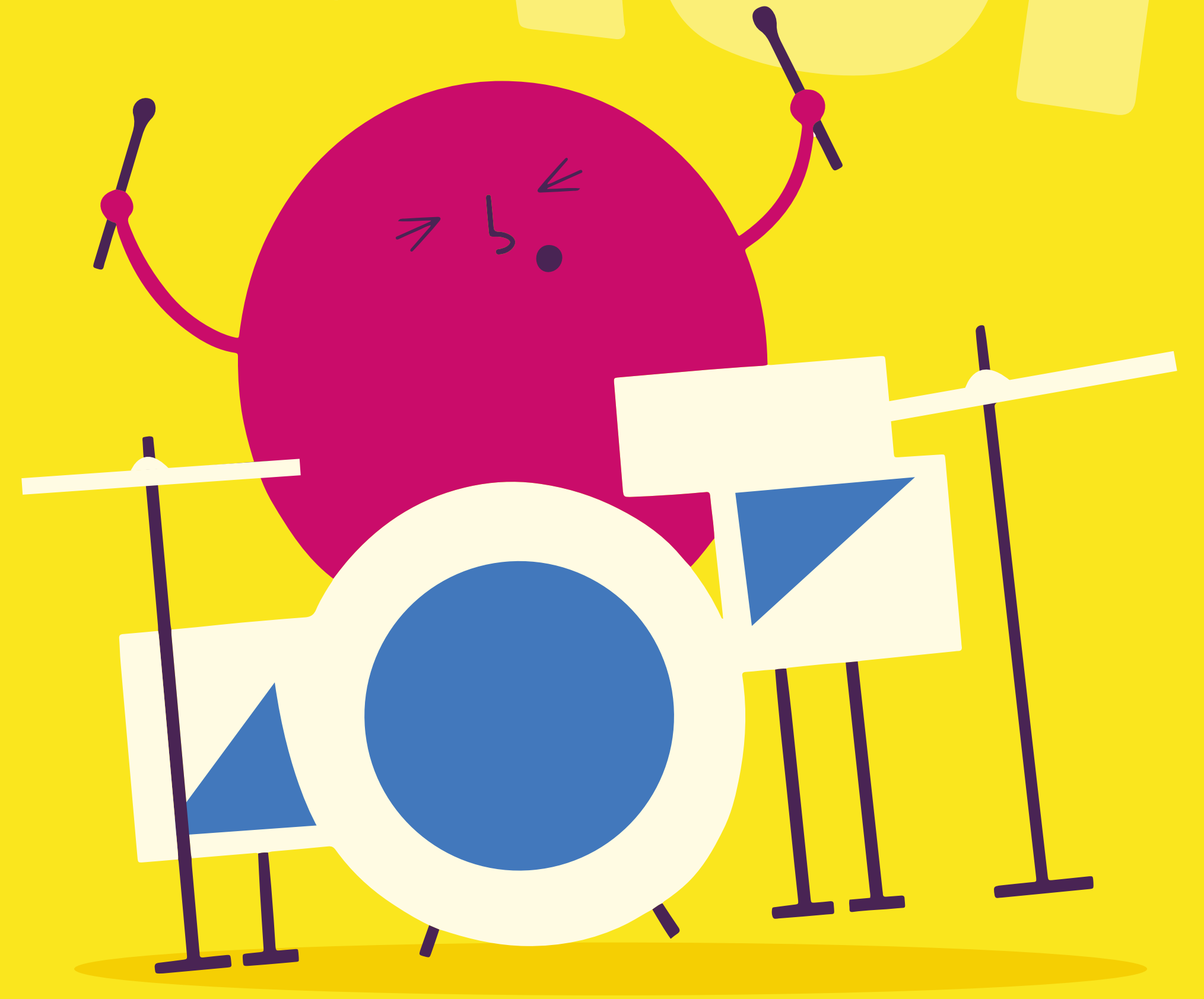
# **BRISTOL BEACON MUSICAL SCHOOL**



**Bristol Beacon Musical Schools Primary Membership 2026/27**

# GRASSH

<b>Bristol Beacon Musical Schools Membership</b>	03
<b>Membership at a glance</b>	04
<b>What's included</b>	06
<b>Whole Class Ensemble Tuition</b>	08



# Become a Bristol Beacon Musical School

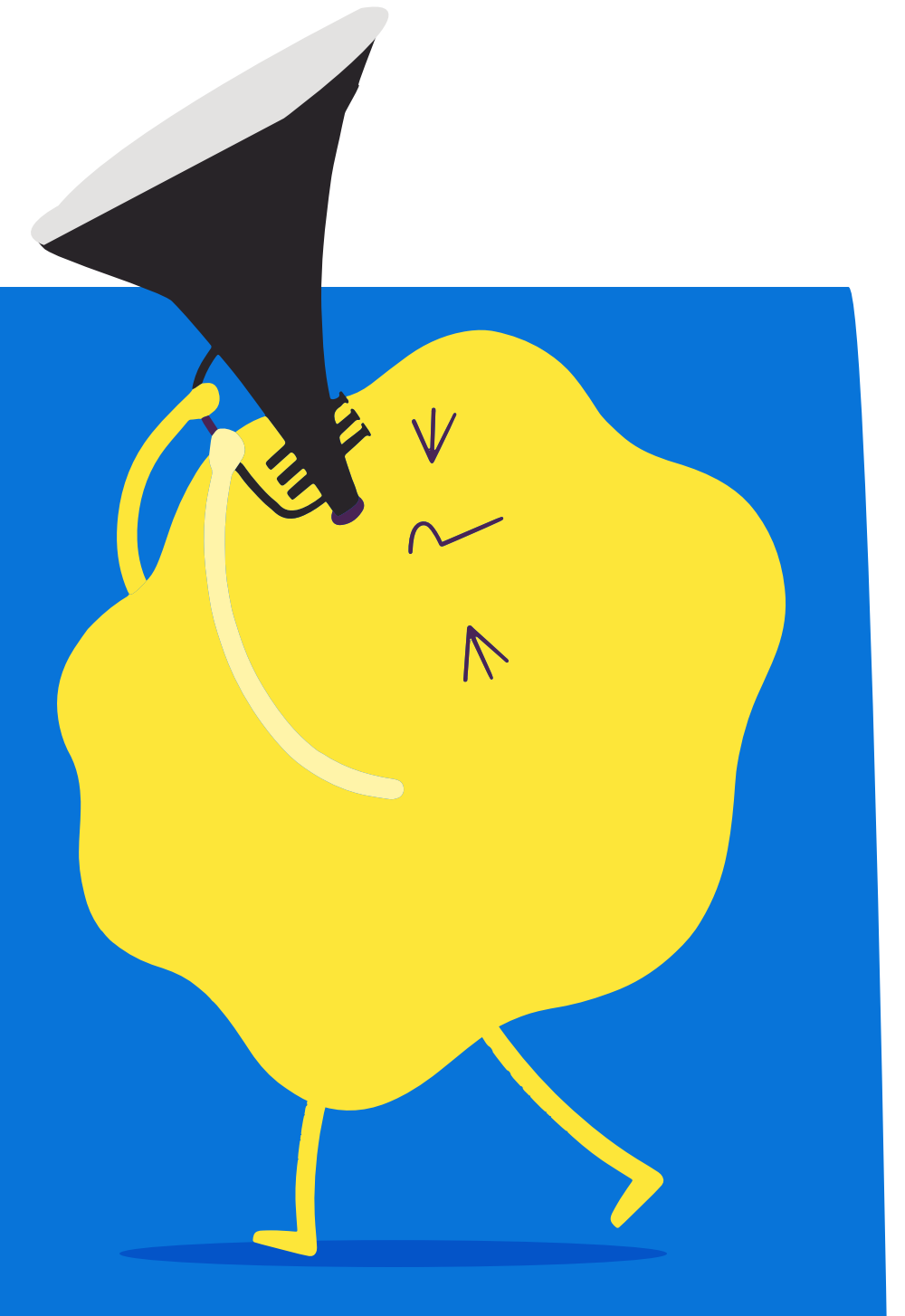
## What is the Bristol Beacon Musical Schools membership?

Whether you are already a musical school or just starting out on the journey, the Bristol Beacon Musical Schools membership aims to support all schools in the city to fully integrate music education into their curriculum. Our award-winning programme supports schools through a range of high-quality curriculum resources, enrichment activities and teacher training opportunities. We work closely with the Department for Education, Ofsted, Arts Council England and industry organisations across the music education sector to make sure we are at the cutting-edge of inclusive practice in musical teaching and learning.



## New for 2026/2027

Our programme is constantly developing in response to the needs of Bristol schools. This year the programme allows more opportunities to access performance in our brand-new hall, re-opened in November 2023 - we are so excited to welcome schools to our exciting new venue! We will be working with a host of new and existing partners to bring even more opportunities to your schools.



We believe that music can support everyone to thrive musically, socially and personally. Our experienced and knowledgeable team is here to support you to create and maintain a thriving inclusive musical community that fosters a lifelong love of music. Being a Bristol Beacon Musical School means you will have access to the resources and tools needed to build cultural capital and bring music to life in your school in line with the National Curriculum

**Adam Kent** Director of Creative Learning and Engagement



# At a glance: Bristol Beacon Musical Schools Primary Membership

## Included in membership

- Full access to the Bristol Beacon's Annual Schools' CPD Programme
- Priority places at massed singing events held at Bristol Beacon performance spaces and across the city
- 10 weeks of Whole Class Ensemble Tuition (WCET) and an instrument set
- Support with your school's Musical Development Plan
- Support with your school's Musical Development Plan
- 1 Staff Meeting run by a member of the Bristol Beacon Hub team
- Full access to the Bristol Beacon curriculum including all digital resources, Musical Moment and Rhythm Notation cards
- 1 x 30 min bespoke singing assembly run by a member of the Bristol Beacon Hub team with follow-up CPD
- Support with your school's singing strategy
- Free access for music leads to use the sheet music library housed at Beacon Music Centre
- Access to workshops/events delivered by partners such as LSO, BSO, Benedetti Foundation and the BBC
- Discount on tickets to selected events/Bristol Beacon Classical Series concerts for students in Year 6



# At a glance: Membership pricing & add-ons

Membership type	Without Bristol Beacon lesson timetabling	With Bristol Beacon lesson timetabling
School size of 1-250 children	£410 annual membership fee	£490 annual membership fee (up to 20 students)
School size of 250-450 children	£520 annual membership fee	£760 annual membership fee (up to 60 students)
School size of 450+ children	£600 annual membership fee	£840 annual membership fee (up to 60 students)
Add-on		Price
Instrumental Music Lessons (without timetabling)*		£47 per hour
Additional timetabling and administration of Instrumental Music Lessons		£40 per block of 10 pupils
WCET Continuation		£360 per class, per double term
Bespoke workshops		£47 per hour
Lunchtime or afterschool choirs/ensembles		£47 per hour
Inset day (up to 5 hours)		£187
Additional staff meetings		£81 per meeting
1-day consultancy		£236
Bespoke CPD sessions		Price available upon request



\*We would recommend offering parents the following options: Individual lessons for 20 minutes/30 minutes, and small group lessons (2-4 students) for 30 minutes. 33 lessons are delivered across an academic year

# What's included

## Instrumental Music Lessons (without timetabling)

We provide highly skilled specialist instrumental Music Tutors who are reflective practitioners and receive ongoing peer support and mentoring. All tutors are fully DBS checked and have had OCR checks where relevant. This enables your pupils to access high-quality music lessons, that are fully supported by the Bristol Beacon education team. Please see our bursaries, discounts and fees policy for details about the discounts and bursaries that we provide for the students in your school.

## Timetabling and administration of Instrumental Music Lessons

We can timetable the music lessons in your school for you through the parent pay and lesson management system, SpeedAdmin. This removes the financial and administrative burdens of managing instrument lessons in your school and means that we can timetable lessons and deal directly with parents for payments and enquiries. No more chasing parents! We charge a small timetabling fee directly to your school and then handle the rest. Please see our terms and conditions for details (including space and time requirements for your school).

## In-school support for the Oak National Academy Music Curriculum

Our brand-new Oak National Academy Primary Music curriculum, created in partnership by Bristol Beacon and Amplify Education, is live and freely available. As a member school, you will receive free CPD for your school on adopting and delivering the Oak curriculum. This includes a 1-2-1 meeting with your Music Subject Lead, a staff meeting to equip staff with the skills and confidence to deliver all lessons, support with instrument inventories, and free access to CPD at Bristol Beacon. MATs can also benefit from INSET delivery.

All materials for all 216 lessons are free to access, and comprise lesson slides, a modelled video of each lesson being taught, audio and visual examples for teachers, and a selection of worksheets, quizzes and further resources. Creative partners include Paraorchestra, National Children's Orchestra, Jasdeep Singh Degun, Jason Singh, Nate Holder and more.

**"Your enthusiasm and subject knowledge is just magnificent and I have been utterly inspired working with you over the past couple of years"**

Teacher in a Bristol Beacon  
Music School

**HIGH QUALITY  
MUSIC LESSONS**

# What's included

## Singing Schools Programme

Singing in schools is hugely joyful and vital for the personal and social development and wellbeing of all pupils. We know that singing benefits mental health by supporting emotional regulation and serving as a positive release mechanism. Singing together in assemblies, choirs and classrooms is a powerful tool for bonding as well as for endorphin release. Bristol Beacon offers training and resources for assemblies, choirs, and classroom singing to help you develop and maintain a joyful, robust and positive singing ethos in your school. We also support you to be able to join with schools across the city in massed singing celebrations in our world-class performance space.

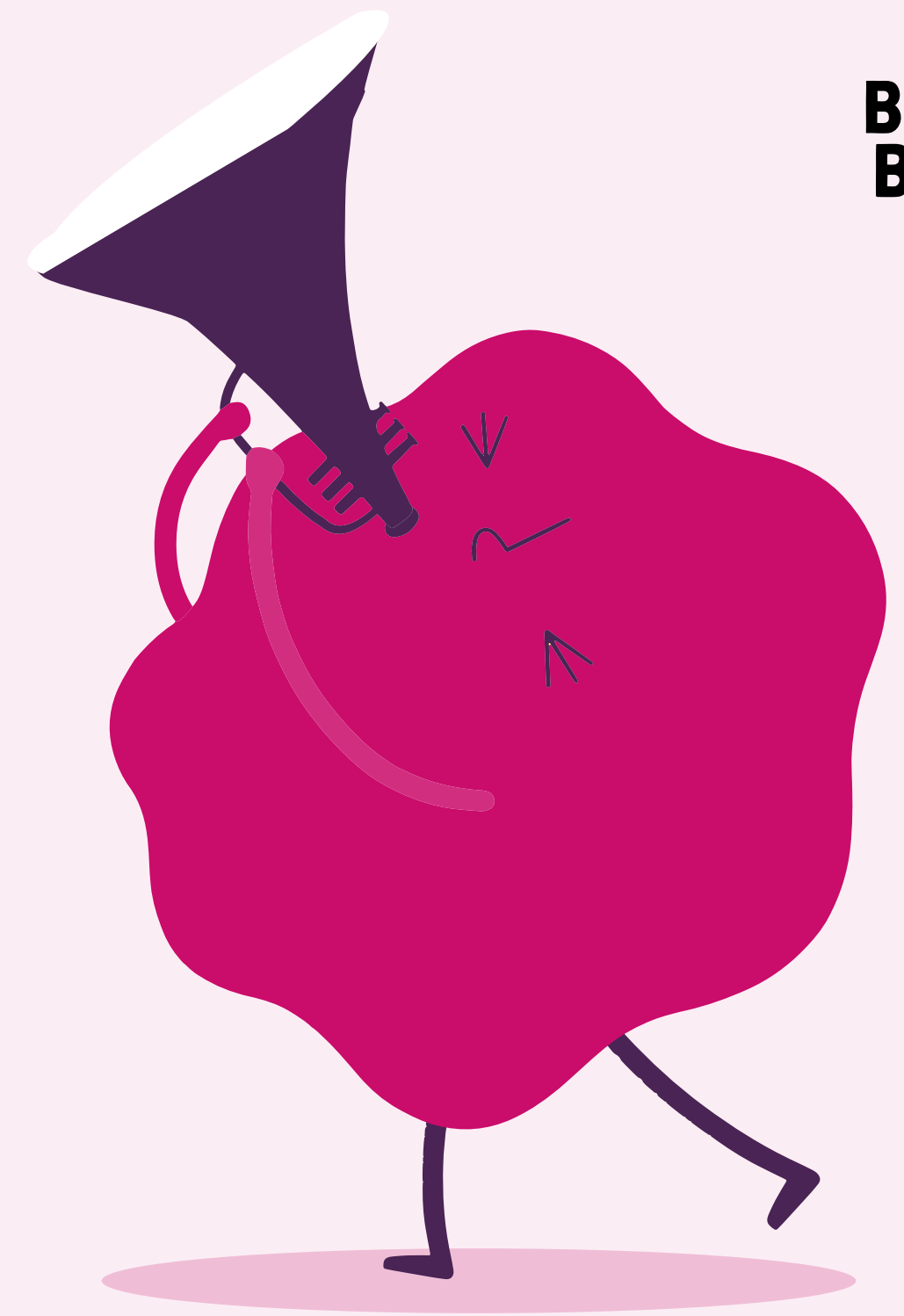
**“Your enthusiasm and subject knowledge is just magnificent and I have been utterly inspired working with you over the past couple of years.”**

**“Really great interactive sessions with a clear way of setting up singing as a strand to show progression.”**

Teachers in a Bristol Beacon Music School

## Continued Professional Development (CPD) for non-specialist and specialist teachers

Bristol Beacon runs a varied CPD programme throughout the school year. Developing expertise in your team is essential to supporting an ongoing musical culture, and our training is always in response to what schools tell us they'd like support with. Training is led by our primary specialist team to support and further develop teachers' confidence to lead music well in your schools. There is training for Deep Dives, Music Development Plans, Singing Strategies, Curriculum Development; as well as collaborations with our national partners including Royal Opera House, ABRSM, Bournemouth Symphony Orchestra, and Sound & Music enabling Bristol schools to be part of national initiatives.



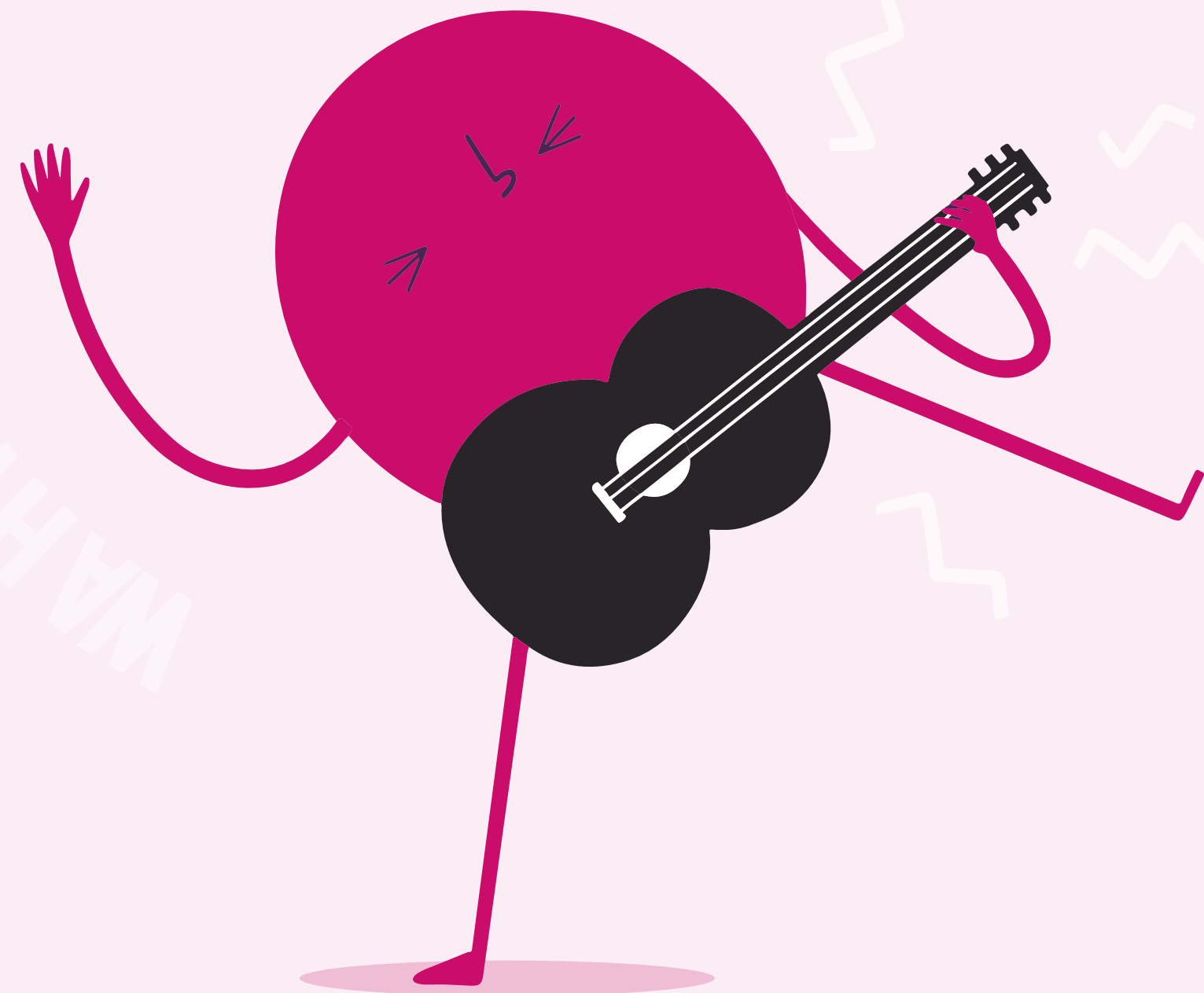
# What's included

## Access to workshops/events delivered by partners

Creating partnerships with organisations across the UK is an integral part of Bristol Beacon's work. In academic year 25/26, we have worked with the BBC, Bournemouth Symphony Orchestra, London Symphony Orchestra, and many others! These organisations create amazing opportunities for your young people, whether it is a workshop at Bristol Beacon or a small and intimate gig with an orchestra! The possibilities are endless! Some partners we are working with this year include Benedetti Foundation, London Symphony Orchestra, Bournemouth Symphony Orchestra, Royal Ballet and Opera, Welsh National Opera, and the BBC.

## Beacon Music Centre Sheet Music Library

You will also automatically become a member of our extensive sheet music library at Beacon Music Centre. We have a large collection of classical music and singing scores (including musical theatre) which can be accessed through our Exams and Library Coordinator.



# Whole Class Ensemble Tuition (WCET)

## Whole Class Ensemble Tuition (WCET)

Our 10 week Whole Class Ensemble Tuition courses allow pupils to explore playing new instruments and creating music as an ensemble, often for the first time. Schools can choose from the selection here, from traditional orchestral instruments to world folk, rock and pop and more.

Bristol Beacon are delighted to be introducing three new WCET offers for 2026-27: pBones (beginner trombones), Music Technology and Creative Composing.

Please use the following information when choosing a WCET course that works for your pupils, staff and fits in best with your curriculum lessons. In making your choice, be mindful that some options require pupils to have some technical and musical skills from curriculum lessons, and age-appropriate guidance is provided



# WCET: New programmes from 2026-27

## Instrument

---

### **pBone**

For Year 4 upwards, pBones are a simple, lightweight, but high-quality sounding beginner trombone. A new offer from Bristol Beacon to explore brass instruments - a staple of jazz, soul and orchestral music.

---

### **Music technology**

or Year 5 upwards, pupils will learn to create authentic sounding contemporary music using the online music production software YuStudio in Charanga. Our tutors work with a School's own IT systems and devices to create original music as a class and individuals.

---

### **Creative Composing**

For Year 4 upwards. Suitable for schools who want to extend their music learning, Bristol Beacon will send a professional composer or songwriter into your classroom for a deep-dive into how to write music. Working to the abilities of the class, after 10 weeks you will have your own music or songs to share with the school.

# WCET: Recommended programmes from Year 3 upwards

## Instrument

---

### Djembe

A West African percussion staple, the Djembe is fantastic for developing rhythm skills. With this highly inclusive and accessible drumming choice, the class will develop beat-keeping and listening skills, whilst learning different playing techniques.

---

### Recorder

Recorder playing allows pupils to begin reading simple music notation. This is great introduction to woodwind instruments, with rhythm games, notation games and a fun selection of repertoire.

---

### Brass

With Trumpets, Cornets and Trombones in our Brass course, this is one of the most exciting courses on offer. Ensemble playing is at the heart of brass playing, whether for jazz, soul or classical music, with these sessions being no different.

---

### Violin

Sometimes viewed as tricky to master, the Violin is a staple in all orchestras and folk bands, and film and gaming music. Taught in a modern and engaging way, pupils can be exploring beginner techniques such as plucking (pizzicato), and accessible music.

# WCET: Recommended programmes from Year 3 upwards

## Instrument

### DooDs and TooTs

Simple clarinets and flutes, Doods and Toots are a good way to introduce woodwind instruments, the feature of many jazz, soul and orchestral groups. Pupils explore music notation while developing their performance skills.

### Ukulele

Learning the ukulele is a fun and engaging way for pupils to explore chords, develop rhythmic skills and play as an ensemble, whilst singing. Pupils will master popular songs that they will be able to perform

**FLEXIBLE  
LEARNING**



# WCET: Recommended programmes for Year 5 upwards

## Instrument

<b>Woodwind</b>	Popular with primary-aged beginners, Flutes and Clarinets feature together in this offer. This rewarding course supports Pupils to read music notation, develop new skills and perform.
<b>Wind Band</b>	Schools who find it difficult to decide on a course can have the best of both worlds by choosing Wind Band; a mixture of both brass and woodwind. Perfect for enabling differentiation and exposure to a wider range of instruments.
<b>Samba</b>	Latin American carnival staple, Samba drumming is fun and vibrant and extends Pupils skills playing together. The option focuses on extending rhythmic skills, developing solo opportunities and leading – great for vibrant school performances.
<b>Steel Pans</b>	If you are looking for a challenge for your most musical pupils, look no further than Steel Pans. Playing rhythm and pitch together, this course is a wonderful opportunity for pupils to dive into instrumental learning and its cultural context.
<b>Rock Band</b>	A firm favourite with schools, our Rock Band course creates your own class band, comprising two instruments from guitar or keyboard, drums or bass guitar. Great for budding rockstars and enabling your pupils to explore self-expression.

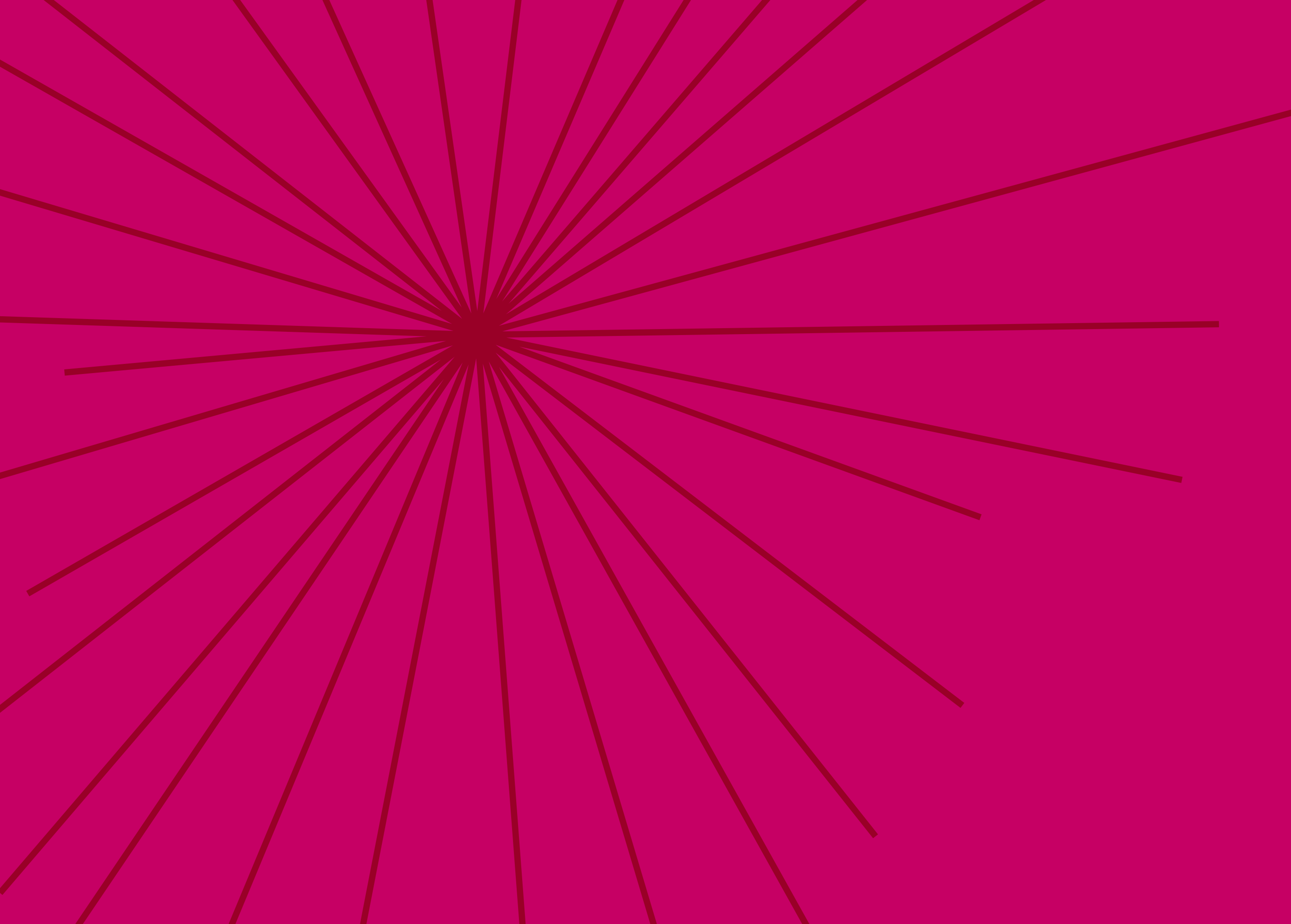
# WCET: Performance & Continuity

## WCET Performance

At the end of each course, the WCET Tutors will work with the School to stage a performance, ideally to Parents and Carers. In a change to previous years, Bristol Beacon will work with your schools to provide a high quality showcase or sharing to your community – a great way to build confidence, celebrate your pupils' achievements and inspire the next generation of musicians.

## WCET Continuity

Bristol Beacon is delighted to remind you that Membership schools can access a subsidised rate for WCET continuation to keep the music going after your first 10 weeks.



**Find out more about becoming a  
Bristol Beacon Musical School:**

[bookings@bristolbeacon.org](mailto:bookings@bristolbeacon.org)  
0117 204 7140



Supported using public funding by



**ARTS COUNCIL  
ENGLAND**



IMAGE CREDITS: SOUL MEDIA