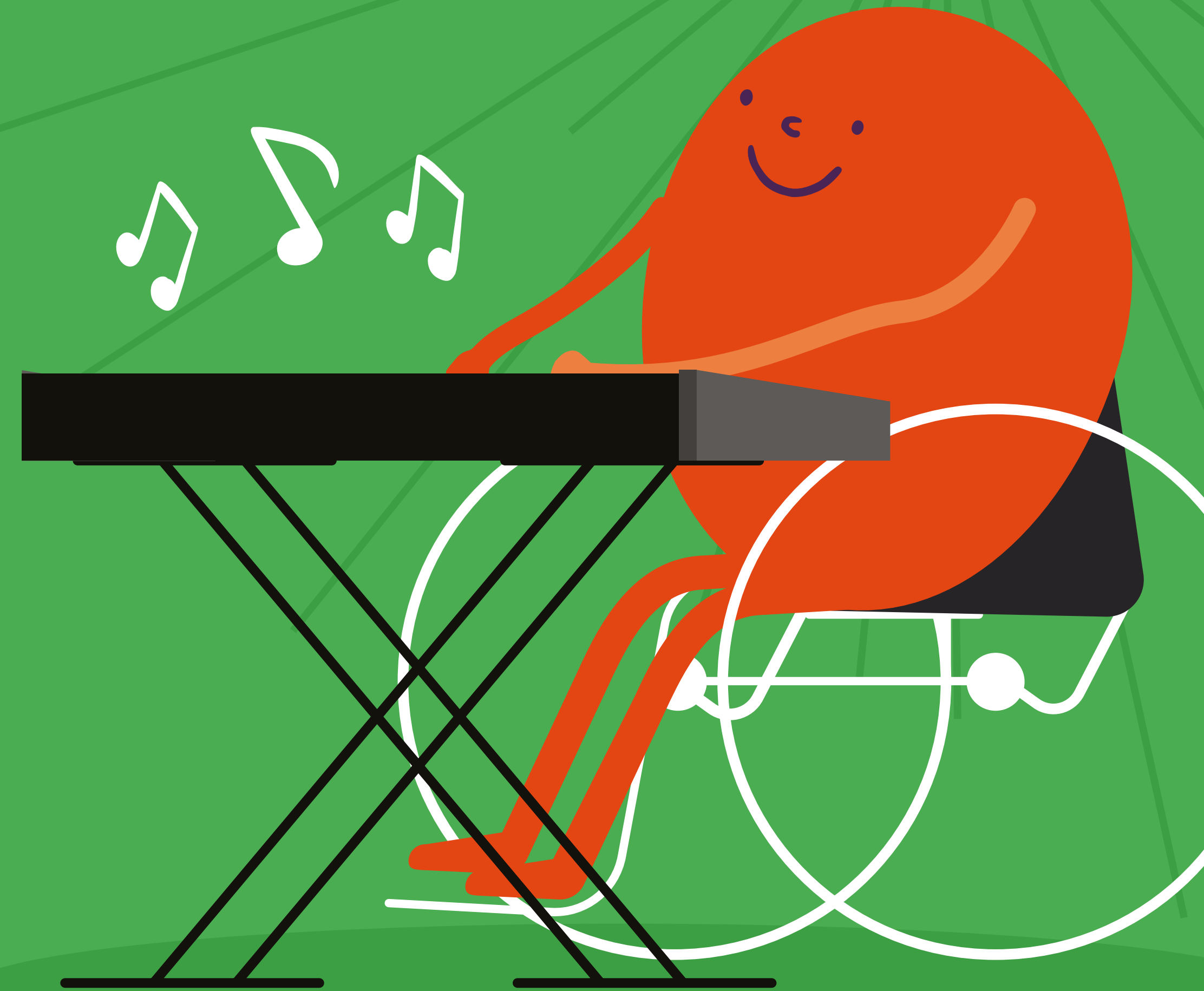


**BRISTOL  
BEACON**

Build a creative community  
and become a

# **BRISTOL BEACON MUSICAL SCHOOL**



**Bristol Beacon Musical Schools SEN Provision Membership 2026/27**

<b>Bristol Beacon Musical Schools Membership</b>	03
<b>Membership at a glance</b>	04
<b>What's included</b>	06



# Become a Bristol Beacon Musical School

## What is the Bristol Beacon Musical Schools membership?

Whether you are already a musical school or just starting out on the journey, the Bristol Beacon Musical Schools membership aims to support all schools in the city to fully integrate music education into their curriculum. Our award-winning programme supports schools through a range of high-quality curriculum resources, enrichment activities and teacher training opportunities. We work closely with the Department for Education, Ofsted, Arts Council England and industry organisations across the music education sector to make sure we are at the cutting-edge of inclusive practice in musical teaching and learning



## A programme specifically for SEN Provisions

Our SEN Provisions membership programme has been specifically designed to support schools to create a thriving musical community. This versatile membership scheme has been designed for use in all settings, from through schools to small units within mainstream settings. (If you are looking to purchase this membership scheme alongside another membership type, please see our bursaries, discounts and fees policy.



“ We believe that music can support everyone to thrive musically, socially and personally. Our experienced and knowledgeable team is here to support you to create and maintain a thriving inclusive musical community that fosters a lifelong love of music. Being a Bristol Beacon Musical School means you will have access to the resources and tools needed to build cultural capital and bring music to life in your school in line with the National Curriculum..

**Adam Kent** Director of Creative Learning and Engagement

# At a glance: Bristol Beacon Musical Schools Primary Membership

## Included in membership

- Full access to the Bristol Beacon's Annual Schools' CPD Programme
- 1x Bespoke CPD session for your school
- Free places at massed singing events held at Bristol Beacon performance spaces and across the city
- Open Orchestras license or 10 weeks of Whole Class Ensemble Tuition (WCET) and an instrument set\*
- Timetabling and administration of instrumental music lessons
- Support with your school's Musical Development Plan
- Music Lead 1-2-1 support session (30 mins)
- Full access to the Bristol Beacon curriculum including all digital resources
- Attendance at our SEN specific instrument training
- Access to SEN Music Leads' network
- Free access for music leads to use the Bristol Beacon sheet music library
- Membership welcome pack, including full set of Musical Moments cards and Rhythm Notation cards and all digital resources to support classroom delivery
- 75% instrument discount for hiring adaptive instruments



# At a glance: Membership pricing & add-ons

## Membership type

Access to Open Orchestra License

## Price

£400

Access to Whole Class Ensemble Tuition

£300

## Add-on

Music Lessons (without timetabling)\*

## Price

£47 per hour

WCET Continuation

£360 per class, per double term

Inset day (up to 5 hours)

£187

Additional staff meetings

£81 per meeting

1-day consultancy

£236

Additional bespoke CPD sessions

£47 per hour



\*We would recommend offering parents the following options: Individual lessons for 20 minutes/30 minutes, and small group lessons (2-4 students) for 30 minutes. 33 lessons are delivered across an academic year.

# What's included

## Continued Professional Development (CPD) for non-specialist and specialist teachers

Bristol Beacon runs a varied CPD programme throughout the school year. Developing expertise in your team is essential to supporting an ongoing musical culture, and our training is always in response to what schools tell us they'd like support with. Training is led by our specialist team to support and further develop teachers' confidence to lead music well in your schools. Sessions will cover topics such as inclusive music making, demonstrations and training on adapted instruments, and curriculum development and progression for your students. Training is often also delivered by our external partners, such as Bournemouth Symphony Orchestra and Trinity College. Your school will also have access to one free bespoke CPD session which will cater to the needs of your school, please contact the education team to book this in..

## Singing Schools Programme

Singing in schools is hugely joyful and vital for the personal and social development and wellbeing of all pupils. We know that singing benefits mental health by supporting emotional regulation and serving as a positive release mechanism. Singing together in assemblies, choirs and classrooms is a powerful tool for bonding as well as for endorphin release. Bristol Beacon offers training and resources for assemblies, choirs, and classroom singing to help you develop and maintain a joyful, robust and positive singing ethos in your school. We also support you to be able to join with schools across the city in massed singing celebrations in our world-class performance space.

**"Your enthusiasm and subject knowledge is just magnificent and I have been utterly inspired working with you over the past couple of years."**

**"Really great interactive sessions with a clear way of setting up singing as a strand to show progression."**

Teacher in a Bristol Beacon  
Music School

## Open Orchestras

Our Open Orchestra membership includes an annual license which enables your school to join Open Orchestras, the largest community of inclusive orchestras in special schools in the UK. Together, we'll build your school orchestra, creating the opportunity for students to make music independently, expressively and be 'part of the band'. One of our Music Leaders will work alongside your staff, with Open Orchestras bringing award-winning training and musical resources including the Clarion – an accessible instrument that can be played with any part of the body including eye movement. The social benefits of learning an instrument, playing together, making music creatively become available to all students including those with profound and multiple learning disabilities (PMLD)

# What's included

## Whole Class Ensemble Tuition (WCET)

Our Whole Class Ensemble Tuition membership includes 10 free weeks of Whole Class Tuition, free delivery and use of a class set of instruments. It is a fun way for your pupils to learn about playing an instrument, maybe for the first time and supports staff who may lack confidence in teaching playing. Schools can choose from a wide choice of instruments including percussion (steel pans, samba and djembe), ukuleles, simplified beginner instruments (DooDs and TooTs, and pBone), Brass, Woodwind (including recorder) or violin. Member schools can access a subsidised rate for WCET continuation to keep the music going following your first 10 weeks. Please get in touch with our team if you'd like to talk about adapting any of our WCET courses to your settings.

## In-school support for the Oak National Academy Music Curriculum

Our brand-new Oak National Academy Primary Music curriculum, created in partnership by Bristol Beacon and Amplify Education, is live and freely available. As a member school, you will receive free CPD for your school on adopting and delivering the Oak curriculum. This includes a 1-2-1 meeting with your Music Subject Lead, a staff meeting to equip staff with the skills and confidence to deliver all lessons, support with instrument inventories, and free access to CPD at Bristol Beacon. MATs can also benefit from INSET delivery.

All materials for all 216 lessons are free to access, and comprise lesson slides, a modelled video of each lesson being taught, audio and visual examples for teachers, and a selection of worksheets, quizzes and further resources. Creative partners include Paraorchestra, National Children's Orchestra, Jasdeep Singh Degun, Jason Singh, Nate Holder and more.

**"Really great interactive sessions with a clear way of setting up singing as a strand to show progression."**

Teacher in a Bristol Beacon Music School



# What's included

## SEN Music Leads Network

Your membership gives you access to our SEN Inclusion Network. The network meets either online or in person several times a year and gives any of your staff delivering music activities an opportunity to meet and discuss experience and best practice. Bristol Beacon provides training on practical music-making ideas for your classroom at these meetings, which in the past have included Samba drumming and on the Sounds of Intent framework for musical development. We're there to support your school with whatever you may and so the content of these meetings is shaped by you.

## Beacon Music Centre Sheet Music Library

You will also automatically become a member of our extensive sheet music library at Beacon Music Centre. We have a large collection of classical music and singing scores (including musical theatre) which can be accessed through our Exams and Library Coordinator.

## Instrumental Music Lessons (without timetabling)

We provide highly skilled specialist instrumental Music Tutors who are reflective practitioners and receive ongoing peer support and mentoring. All tutors are fully DBS checked and have had OCR checks where relevant. This enables your pupils to access high-quality music lessons that are fully supported by the Bristol Beacon education team. Please see our remissions policy for details about the discounts and bursaries that we provide for the students in your school.

## Timetabling and administration of Instrumental Music Lessons

We can timetable the music lessons in your school for you through the parent pay and lesson management system, SpeedAdmin. This removes the financial and administrative burdens of managing instrument lessons in your school and means that we can timetable lessons and deal directly with parents for payments and enquiries. No more chasing parents! We charge a small timetabling fee directly to your school and then handle the rest. Please note, timetabling is done in blocks of 20 students per school. Please see our terms and conditions for details (including space and time requirements for your school).





**Find out more about becoming a  
Bristol Beacon Musical School:**

[bookings@bristolbeacon.org](mailto:bookings@bristolbeacon.org)  
0117 204 7140



Supported using public funding by



**ARTS COUNCIL  
ENGLAND**

IMAGE CREDITS: SOUL MEDIA